



**MORNING PRIDE**

by Honeywell

## 2009 SPECIFICATION WORKSHEET

Coordinates with 4/27/09 Catalog and 4/27/09 Price List

(800) 688-6148 • Fax (937) 264-2677  
www.morningpride.com

***The Quality System for Morning Pride Manufacturing is Certified to ISO 9001:2000***

Upon receipt of this completed form, Honeywell First Responder Products will prepare a highly professional technically detailed, customized specification for your department (at no charge and with a 3-4-business day turnaround time). This specification will describe a high quality product, such as Morning Pride builds, but will allow consideration of all competitive bids. This spec will also reference the current editions of applicable NFPA, OSHA, CEN, CGSB, BNQ and/or Project FIRES standards.

Please fill out this quick questionnaire and fax it to (937) 264-2677 or mail to #1 Innovation Court, Dayton, OH 45414.

**Catalog references correspond to Morning Pride's 2009 catalog.** If you have any questions, or need further background on any point, call our Customer Service Department at (800) 688-6148 any business day between 7:30 a.m. and 4:30 p.m. E.T. (4:00 p.m. on Friday).

Your Morning Pride Distributor (if you have preference): \_\_\_\_\_

Department Name:		Date:
FD Contact:	E-mail Address:	Phone:
Address:		Fax:
City:	County:	State:    Zip:

*Morning Pride Protective  
Clothing Systems for the Fire Service  
is Marketed Exclusively Through:*

**Honeywell**  
**First Responder Products**  
(formerly Total Fire Group)

#1 Innovation Court • Dayton, OH 45414  
(937) 264-2662 • Fax (937) 264-2677 • 1-800-688-6148  
Website: [www.HoneywellFirstResponder.com](http://www.HoneywellFirstResponder.com)  
E-mail: [info@MorningPride.com](mailto:info@MorningPride.com)

## Table of Contents

### GARMENT SPECS

Garment Application Choices	.2
Clothing Styling Choices	.2
Certification Level Choices	.3
Outer Shell Material Choices	.3
Thermal Liner Material Choices	.4-5
Moisture Barrier Material Choices	.5
Moisture Barrier/Thermal Liner Attachment Choices	.5
Available Composites	.6-16
Footnotes for All Clothing	.17
Winter Liner Choices	.18
Advanced Protective Tracking (APT) Barcode	
System Choices	.18
NFPA 1851 Support Services	
Advanced Cleaning and Inspection	.18
Additional Advanced Cleaning Only	.18
5-Year Wear Life Warranty	.18
Custom Stock Clothing Choices	.19
Express Service Delivery Choices	.19

### COAT SPECS

Reflective Trim Placement Choices	.20
Trim Material and Color Choices	.20-21
Lettering Material and Placement Choices	.21
Other Reflective Choices	.21

### COAT CUSTOM OPTIONS

Chinstrap & Collar Options	.21
Closure Options	.21-22
Cuff Options	.22
Disposable Analysis Strip Option	.22
Elbow Reinforcement Options	.22

Epaulettes Option	.22
Hood Options (USR/EMS garments)	.23
Liner Options	.23
Lumbar Support Coat Options	.23
Passport Options	.23
Personalization (Int. Customization) Options	.23
Pocket, Clip and Hook Options	.24
Rescue Options	.25
Shoulder Option	.25
Wildland/Structural Dual Certification Option	.25
Wristlet Options	.25

### PANT SPECS

Reflective Trim Placement Choices	.26
Trim Material and Color Choices	.26
Suspender Choices	.26

### PANT CUSTOM OPTIONS

Belt Option	.27
Boot to Pant Interface Options	.27
Closure Options	.27
Crotch Options	.27
Cuff Options	.27
Disposable Analysis Strip Option	.27
Knee Options	.28
Liner Options	.28
Pocket Options	.28
Rescue Options	.29
Take-Up Strap Options	.29
Wildland/Structural Dual Certification Option	.29

### AUXILIARY CLOTHING OPTIONS .30

## GARMENT SPECS

### STEP 1. GARMENT APPLICATION CHOICES – ✓ One

(Catalog Reference Pages 22-36)

- Clothing for Structural Fire Fighting with CBRN Option (Project HEROES®)
- Clothing for Structural Fire Fighting
- Clothing Wildland/Structural Dual Certification
- Clothing for Proximity Fire Fighting – See note on page 30 on Gentex's Cleaning and Care Instructions
- Clothing for Technical Rescue and Recovery Applications, EMS Applications and Liquid Splash Protection
- Clothing for Wildland and Technical Rescue/Utility Applications

**There are two ways to purchase Wildland certified clothing product: 1. The Wildland Dual Certification Option for NFPA 1971 Certified Structural Fire Fighting Gear and 2) The Wildland Quad (or Quint if Rescue and Recovery is also specified) Certification for NFPA 1951 Technical Rescue and Recovery Garments (which are also NFPA 1999 EMS Certified and NFPA 1992 Liquid Splash HazMat Certified).**

**Another Honeywell company, American Firewear also offers two Wildland clothing options (please see their catalog for full details): 1. Tri-certified NFPA 1977 Certified Wildland Jumpsuits and 2 Piece BDUs (also Certified to NFPA 1971 Requirements for Station Uniforms and NFPA 1951 Technical Rescue and Recovery Utility Garments, and 2) American Firewear's Traditional Wildland Jumpsuit or 2 Piece Sets.**

- Clothing for Emergency Medical Services (EMS)

### STEP 2. CLOTHING STYLING CHOICES – ✓ One

(Catalog Reference Pages 43-44)

- Tailed length (6" shorter in front) approximately 18% lighter than 35" coat - highly recommended
- Normally mid-thigh (approx. 35") coat

**STEP 3. CERTIFICATION LEVEL CHOICES – ✓ One**

(Catalog Reference Page 17)

LEVEL OF BLOODBORNE PATHOGEN RESISTANT PROTECTION (Structural and Proximity Choice Only)

- PRH – Tested for Bloodborne Pathogen Resistance as worn – CBRN Certified
- BPR – Tested for Bloodborne Pathogen Resistance as worn – recommended
- LTO – Tested for Bloodborne Pathogen Resistance with interface areas duct taped to mannikin – **NOT** recommended
- TAC – Reversible Clothing, also LTO levels of Bloodborne Pathogen Resistance

**STEP 4. OUTER SHELL MATERIAL CHOICES – ✓ One & Select Color(s)**

**Note:** Please see note on composites available on page 6 as the system testing required on the 2007 Edition of NFPA 1971 means some combinations are NOT available. Charts on pages 6-16 also allow comparison of THL and TPP between composites. SWR = Standard Water Repellence, EWR = Enhanced Water Repellence

**STRUCTURAL BPR and LTO CLOTHING** (Catalog Reference Pages 67-74)

Material	Oz	Series	Colors (Select One)
<input type="checkbox"/> Basofil®/Kevlar® Rip Stop <sup>1,3,4</sup> (EWR)	7.5	25xx	(Natural) Pale Yellow, Bright Yellow, Golden Brown, Black
<input type="checkbox"/> Basofil®/Kevlar®/Zylon Twill <sup>1,3,4</sup> (EWR)	7.72	35xx	Brown
<input type="checkbox"/> Kevlar®/Nomex® Rip Stop <sup>1,4,5</sup> (SWR)	7.0	14xx	Black, Yellow, Rust, Navy, Khaki, Gold
<input type="checkbox"/> Kevlar®/Nomex® Rip Stop <sup>1,4</sup> (EWR)	7.0	34xx	Black, Yellow, Rust, Navy, Khaki, Gold
<input type="checkbox"/> Kevlar®/Nomex® Rip Stop <sup>1,4</sup> (EWR)	7.0	44xx	Black, Bronze, Brass, Gold
<input type="checkbox"/> Kevlar®/Nomex® Rip Stop <sup>1,4</sup> (EWR)	7.5	54xx	Black, Yellow, Rust, Navy, Khaki, Gold
<input type="checkbox"/> Nomex® IIIA Rip Stop <sup>1,4,7</sup> (SWR)	6.0	20xx	Natural, Black, Tan, Yellow
<input type="checkbox"/> Nomex® IIIA Rip Stop <sup>1,4,7</sup> (EWR)	6.0	21xx	Natural, Black, Tan, Yellow, Red, Navy, Royal Blue
<input type="checkbox"/> Nomex® IIIA Duck <sup>1,4</sup> (SWR)	7.5	24xx	Natural, Navy, Black, Tan, Yellow, Royal Blue, Red
<input type="checkbox"/> Pbi™/Kevlar® Rip Stop <sup>1,3,4</sup> (EWR)	7.5	32xx	Bronze, Black 3 pic
<input type="checkbox"/> Pbi™ Matrix Rip Stop <sup>1,3,4</sup> (EWR)	7.5	42xx	Bronze, Black
<input type="checkbox"/> Pbi™ Matrix Rip Stop <sup>1,3,4</sup> (EWR)	7.2	43xx	Bronze, Black
<input type="checkbox"/> PBO®/Kevlar® Rip Stop <sup>6,7</sup> (EWR)	5.5	13xx	Bronze
<input type="checkbox"/> PBO®/Kevlar®/Nomex® Rip Stop <sup>1,3,4</sup> (EWR)	7.5	64xx	Light Gold, Yellow, Dark Gold, Black Gold
<input type="checkbox"/> PBO®/Technora Rip Stop <sup>1,3,4</sup> (EWR)	7.7	33xx	Bronze

**PROXIMITY CLOTHING** (Catalog Reference Page 75)

Material	Oz	Series	Colors
<input type="checkbox"/> 33% Pbi™/67% Para Aramid Aluminized Rip Stop <sup>2,6</sup> Note: Footnote explanations provided on page 11.	7.0	76xx	Silver

**STRUCTURAL TAC CLOTHING** (Catalog Reference Pages 67-74)

Material	Oz	Series	Colors
<input type="checkbox"/> Kevlar®/Nomex®	7	14xx	Black
<input type="checkbox"/> Kevlar®/Nomex®	7	14xx	Khaki

**Note:** Black Outer Shell is designed to go with the Black Thermal Liner. Khaki Outer Shell is designed to go with the Camo Thermal Liner

**TECHNICAL RESCUE AND RECOVERY CLOTHING** (Catalog Reference Pages 70-73)

Material	Oz	Series	Colors (Select One)
<input type="checkbox"/> PBO®/Kevlar® Rip Stop <sup>6</sup>	5.5	13xx	Bronze
<input type="checkbox"/> Nomex® IIIA Rip Stop <sup>6</sup> (EWR)	6.0	21xx	Natural, Black, Tan, Yellow, Red, Navy, Royal Blue
<input type="checkbox"/> Pbi™/Twaron®/FR Rayon	6.0	46xx	Yellow, Navy, Bronze (Special Order Colors: Red, Spruce, Orange)

**EMS CLOTHING** (Catalog Reference Page 76)

Material	Oz	Series	Colors (Select One)
<input type="checkbox"/> 100% Texturized Polyester	5.5	81xx	Royal Blue, Bright Orange, Bright Lime
<input type="checkbox"/> Nomex® IIIA Rip Stop <sup>1,4,7</sup> (EWR)	6.0	21xx	Natural, Black, Tan, Yellow, Red, Royal Blue, Navy

NOTE: Footnote explanations provided on Page 17

## STEP 5. THERMAL LINER MATERIAL CHOICES – ✓ One

(Catalog Reference Pages 80-83)

### STRUCTURAL PRH, BPR & LTO and PROXIMITY CLOTHING

Material		Oz	Series
<p>Note: Please see note on Structural and Proximity composites available on page 6 as the system testing required on the 2007 Edition of NFPA 1971 means some combinations are NOT available.</p>			
<input type="checkbox"/>	Meta Aramid/Spunlace 1 Layer	3.6 oz Spun Meta Aramid® Facecloth w/1 Layer of Spunlace – 1.6 oz <sup>1,2,3,8</sup>	5.2 xxHx
<input type="checkbox"/>	Meta Aramid/Spunlace 2 Layer	3.6 oz Spun Meta Aramid® Calendered Facecloth w/2 Layers Spunlace – 3.2 oz <sup>1,3,8</sup>	6.8 xxix
<input type="checkbox"/>	Meta Aramid/Spunlace 2 Layer	3.9 oz Spun Meta Aramid® Waffled Facecloth w/1 Layer 2.3 oz and 1 Layer 1.5 Spunlace – 3.2 oz <sup>1,3,8</sup>	7.7 xxZx
<p>Note: This liner is only available for use with these Tencate/Southern Mills outer shells: 13xx, 14xx, 20xx, 21xx, 24xx, 32xx, 33xx, 34xx, 42xx, 64xx and 74xx. When Quantum 3D™ is used with Gemini™ Matrix™ (42xx) or Millenia™ XT (33xx) with Crosstech® moisture barriers, the system is a Peak Performance System™ (and will be so labeled).</p>			
<input type="checkbox"/>	Meta Aramid/Spunlace 2 Layer	3.9 oz Spun Meta Aramid® Facecloth w/1 Layer 2.3 oz Spun Meta Aramid® Facecloth with 3D Pattern – 3.2 oz <sup>1,3,8</sup>	6.2 xxLx
<input type="checkbox"/>	Meta Aramid/Spunlace 3 Layer	3.6 oz Spun Meta Aramid® Facecloth w/3 Layers of Spunlace – 4.8 oz <sup>1,2,3</sup>	8.4 xxJx
<input type="checkbox"/>	Nomex®/Batt Heavy	3.4 oz Spun Nomex® Facecloth w/6.0 oz Heavy Nomex® Batt <sup>1,2,4,6</sup>	9.4 xx2x
<input type="checkbox"/>	Nomex®/Batt Light	3.4 oz Spun Nomex® Facecloth w/3.8 oz Light Kevlar® Batt (70% Garneted, 30% Virgin) <sup>1,2,3,4</sup>	7.2 xx0x
<input type="checkbox"/>	Nomex®/Batt Light	3.2 oz Spun Nomex® Rip Stop Facecloth w/4.0 oz Light Kevlar® Batt (100% Virgin) <sup>1,2,3,4</sup>	7.2 xxFx
<input type="checkbox"/>	Nomex® E89 2 Layer	7.05 oz Spun Nomex® Calendered Facecloth w/1 Layer (2.3 oz) and w/1 Layer (1.5 oz) of E89 Spunlace – 3.8 oz <sup>1,2,3,4</sup>	7.4 xxUx
<input type="checkbox"/>	Nomex®/E89 3 Layer	3.4 oz Spun Nomex® Facecloth w/3 layers E-89 Spunlace – 4.5 oz <sup>1,2,3</sup>	7.9 xx3x
<input type="checkbox"/>	Nomex®/E89 3 Layer	3.2 oz Spun Nomex® Rip Stop Facecloth w/3 Layers of E89 Nomex® Spunlace – 4.5 oz <sup>1,2,3</sup>	7.7 xxRx
<input type="checkbox"/>	Nomex®/E89 3 Layer	3.25 oz Spun Nomex® Calendered Facecloth w/3 Layers of 1.5 oz E89 Spunlace – 4.5 oz <sup>1,2,3,4</sup>	7.75 xxWx
<input type="checkbox"/>	Nomex® One Layer	Nomex® Duck Weave One Layer <sup>1,2,3</sup>	9.5 xxNx
<input type="checkbox"/>	Nomex® Semi-Slick	3.9 oz Filament/Spun Nomex® Facecloth w/3.8 oz Light Kevlar® Batt <sup>1,2,3,6</sup>	7.7 xx7x* <b>(xx1x)</b>
<input type="checkbox"/>	Nomex® Semi-Slick	3.9 oz Filament/Spun Nomex® Facecloth w/1 Layer (1.5 oz) and w/1 Layer (2.3 oz) of E89 Nomex® Spunlace – 3.8 oz <sup>1,2,3,4,8,9</sup>	7.7 xxQx* <b>(xx4x)</b>
<input type="checkbox"/>	Nomex® Semi-Slick	3.9 oz Filament/Spun Nomex® Facecloth w/6.0 oz Heavy Nomex® Batt <sup>1,2,3,6</sup>	9.9 xx6x <b>(N/A)</b>
<input type="checkbox"/>	Nomex® Semi-Slick	3.9 oz Filament/Spun Nomex® Facecloth w/1 Layer of 1.5 oz E89 Nomex® Spunlace <sup>5</sup>	6.4 xxCx <b>(N/A)</b>
<input type="checkbox"/>	Nomex® Semi-Slick	3.8 oz Filament/Spun Nomex® Facecloth w/4.0 oz Light Nomex®/Kevlar® Batt <sup>1,2,3,4</sup>	7.8 xxVx* <b>(xxGx)</b>
<input type="checkbox"/>	Nomex® Semi-Slick	3.8 Filament/Spun Nomex® Facecloth w/2 Layers of E89 Nomex® Spunlace – 3.0 oz <sup>1,2,3,4</sup>	6.8 xxBx* <b>(xxMx)</b>
<input type="checkbox"/>	Nomex® Semi-Slick	3.8 Filament/Spun Nomex® Facecloth w/3 Layers of E89 Nomex® Spunlace – 4.5 oz <sup>1,2,3,4</sup>	8.3 xx8x* <b>(xxPx)</b>
<input type="checkbox"/>	Nomex® Semi-Slick	3.9 Caldura® Facecloth w/3 Layers of E89 Nomex® Spunlace – 4.5 oz <sup>1,2,3,4</sup>	9.5 xxSx* <b>(xxYx)</b>

Note: The xxCx liner will meet CEN requirements but not the higher insulation requirements of NFPA.

\*Due to shortages in Nomex® filiment fibers, these replacement liners use about half the normal amount of Nomex® filament in the facecloth. N/A = no War Time Replacement Liner available.

**STEP 5. THERMAL LINER MATERIAL CHOICES *conitnued***

(Catalog Reference Page 83)

**STRUCTURAL TAC CLOTHING**

Material		Oz	Series
<input type="checkbox"/> Nomex® One Layer	Nomex® Duck Weave One Layer – Black	9.5	xxNx

**Note:** Black Outer Shell is designed to go with the Black Thermal Liner.**TECHNICAL RESCUE AND RECOVERY & EMS CLOTHING**

Technical Rescue and Recovery & EMS products are 2 layer systems (an outer shell & moisture barrier only), so the third digit will remain X in all cases. Winter liners are available for all Morning Pride garments except TAC (see Step 9 on page 18). NOTE: Footnote explanations provided on Page 17.

**STEP 6. MOISTURE BARRIER MATERIAL CHOICES – ✓ One**

(Catalog Reference Pages 85-87)

**STRUCTURAL PRH OR PROXIMITY PRH CLOTHING**

Material		Oz	Series
<input type="checkbox"/> GORE™ CHEMPAK® Type CP-01 Type CP-01	2.9 oz GORE™ CHEMPAK® Selectively Permeable Film Sandwiched Between 3.3 oz Nomex® Pajama Check Woven Substrate and 1.8 oz Nomex®/Kevlar® Woven Textile <sup>1,2,3,4</sup>	8.0	xxxH

**STRUCTURAL BPR & LTO OR PROXIMITY BPR & LTO CLOTHING**

Material		Oz	Series
NOTE: Please see note on Structural and Proximity composites available on page 6 as the system testing required on the 2007 Edition of NFPA 1971 means some combinations are NOT available.			
<input type="checkbox"/> Crosstech® Type 4A	1.7 oz Crosstech® Selectively Permeable Film Sandwiched Between 3.3 oz Nomex® Pajama Check Woven Substrate and 1.8 oz Nomex®/Kevlar® Woven Textile <sup>1,2,3,4</sup>	6.8	xxxT
<input type="checkbox"/> Crosstech® Type 2C	1.7 oz Crosstech® Selectively Permeable Film Laminated to 3.3 oz Nomex® Pajama Check Woven Substrate	5.0	xxx2
<input type="checkbox"/> RT7100® Type 3D	1.6 oz GORE® Selectively Permeable Film Laminated to 3.0 oz Nomex® Pajama Check Woven Substrate	4.6	xxx0
<input type="checkbox"/> No Moisture Barrier	NOT NFPA, CEN ONLY	NA	xxxN

**STRUCTURAL TAC CLOTHING**

Material		Oz	Series
<input type="checkbox"/> RT7100® Type 3D	1.6 oz GORE® Selectively Permeable Film Laminated to 3.0 oz Nomex® Pajama Check Woven Substrate	4.6	xxx0

**TECHNICAL RESCUE AND RECOVERY CLOTHING AND FR EMS**

Material		Oz	Series
<input type="checkbox"/> Crosstech SR®	1.0 oz Crosstech SR® 3.3 oz on Nomex® Pajama Check <sup>6</sup>	4.3	xxxC

**NON-FR EMS CLOTHING**

Material		Oz	Series
<input type="checkbox"/> Crosstech EMS®	1.3 oz Crosstech EMS® Laminated to 2.2 oz Polyester <sup>6</sup>	3.5	xxx9

NOTE: Footnote explanations provided on Page 17.

**STEP 7. MOISTURE BARRIER/THERMAL LINER ATTACHMENT CHOICES – ✓ One & Circle One**

(Catalog Reference Pages 80-87)

**STRUCTURAL PRH, BPR & LTO OR PROXIMITY BPR & LTO CLOTHING**

- Detachable (Standard) (Both) (Coat Only) (Pants Only)  
 Sewn-in at Neck or Waist (Both) (Coat Only) (Pants Only)

**TECHNICAL RESCUE AND RECOVERY & EMS CLOTHING**

- Sewn-in All Around (Standard)  
 Detachable via Hook & Pile

## STEP 8. CHECK TO VERIFY MODEL # SELECTED IS AVAILABLE

### THIRD PARTY TESTED AND COMPLIANT MODEL NUMBERS

#### *Structural and Proximity PRH, BPR and LTO*

**Composites Available** – After making your material choices, the charts on pages 8 to 18 will help you determine the appropriate model numbers. However, it is important to remember that the new 2007 edition of NFPA 1971 Structural and Proximity fire fighting standard require some composite testing where all three layers of the system are tested together. Some possible combinations of materials fail to pass one or several of these composite tests, and hence are not available. Additionally, this composite testing is relatively expensive. So, not all possible combinations of materials were tested. All popular composites were tested, but some obscure and infrequently combined material combinations were not tested. Therefore, it is necessary to refer to the list below to determine if the particular model number you have decided upon is available. If you have selected a model number that is not listed below, it is not available. Please contact our Customer Service Department in Dayton (ask for the Inside Marketing Associate for your geographic region). In all cases, there will be an available system that is very close to what you had initially decided upon, and your Inside Marketing Associate will assist you in locating that system. Your Inside Marketing Associate will also have updated information on any recently tested or added systems.

**Trade Names** – The 2007 editions of NFPA 1971 Standard 1971 require that the same materials from different mills must be individually tested in each composite. In other words, if 7.5 oz. Duck weave PBI from Southern Mills passes all composite testing (Thermal Heat Loss and Thermal Protective Performance, THL and TPP, primarily); the same material description from Difco must also be tested. Because of the expense of this composite testing, this has effectively meant that on some composite model numbers, we may have done the necessary testing with only one or two mills' materials. We suggest for this reason that you order by our model number. If a customer wishes a particular mill's cloth in a system, please contact our Customer Service Department to see if that particular mill's product was tested in the composite desired.

**The following are registered trademarks of the noted firms and are used herein per their prior approval:**

Basofil® – BASF  
 Crosstech® and RT7100® – W.L. Gore & Co., Inc.  
 Nomex® – E.I. Du Pont de Nemour Inc.

#### *TPPs and THLs of Available Systems*

Note: War Time replacement liners for xx1x, xx4x, xx6x, xxCx, xxGx, xxMx, and xxPx will be substituted until original products are again available. THL and TPP data still accurate.

### #13 Outer Shell – PBO™/Kevlar® Enhanced Water Repellency Rip Stop 5.5 oz

Model	Thermal Liner	Moisture Barrier	THL	TPP
1300	Nomex® Facecloth/Batt Light	RT7100® Type 3D	242.05	37.8
1302	Nomex® Facecloth/Batt Light	Crosstech® Type 2C	238.01	35.9
1310	Nomex® Semi-slick/Batt Light	RT7100® Type 3D	250.38	36.0
1320	Nomex® Facecloth/Batt Heavy	RT7100® Type 3D	217.42	44.1
1322	Nomex® Facecloth/Batt Heavy	Crosstech® Type 2C	244.18	38.0
1330	Nomex® Facecloth/3 Layer E89	RT7100® Type 3D	262.47	39.2
1332	Nomex® Facecloth/3 Layer E89	Crosstech® Type 2C	301.87	36.1
1370	Nomex® Semi-slick/Batt Light	RT7100® Type 3D	224.64	40.0
1372	Nomex® Semi-slick/Batt Light	Crosstech® Type 2C	229.01	35.9

Model	Thermal Liner	Moisture Barrier	THL	TPP
13J0	Meta Aramid/3 Layer Spunlace	RT7100® Type 3D	252.02	44.2
13Q0	Nomex® Semi-slick/2 Layer E89	RT7100® Type 3D	274.74	36.1
13S0	Nomex® Semi-slick/2 Layer E89	RT7100® Type 3D	257.00	41.9
13S2	Nomex® Facecloth/3 Layer E89	Crosstech® Type 2C	279.64	39.5
13Y0	Nomex® Facecloth/3 Layer E89	RT7100® Type 3D	274.00	37.2
13Y2	Nomex® Semi-slick/3 Layer E89	Crosstech® Type 2C	288.62	36.1
13ZT	Nomex Waffle Semi-slick/ 3D 2 Layer E89	Crosstech® Type 4A	255.90	41.9
13Z0	Nomex Waffle Semi-slick/ 3D 2 Layer E89	RT7100® Type 3D	265.63	37.1
13Z2	Nomex Waffle Semi-slick/ 3D 2 Layer E89	Crosstech® Type 2C	290.81	35.7

## THIRD PARTY TESTED AND COMPLIANT MODEL NUMBERS

### TPPs and THLs of Available Systems (continued)

Note: War Time replacement liners for xx1x, xx4x, xx6x, xxCx, xxGx, xxMx and xxPx will be substituted until original products are again available. THL and TPP data still accurate.

#### #14 Outer Shell – Kevlar®/Nomex® Standard Water Repellency Rip Stop 7.0 oz

Model	Thermal Liner	Moisture Barrier	THL	TPP	Model	Thermal Liner	Moisture Barrier	THL	TPP
1400	Nomex® Facecloth/Batt Light	RT7100® Type 3D	250.94	41.2	14i2	Meta Aramid/2 Layer Spunlace	Crosstech® Type 2C	302.83	37.7
1402	Nomex® Facecloth/Batt Light	Crosstech® Type 2C	253.02	43.0	14M0	Nomex® Semi-slick/2 Layer E89	RT7100® Type 3D	278.25	38.7
1410	Nomex® Semi-slick/Batt Light	RT7100® Type 3D	247.53	42.2	14M2	Nomex® Semi-slick/2 Layer E89	Crosstech® Type 2C	294.23	39.6
1412	Nomex® Semi-slick/Batt Light	Crosstech® Type 2C	253.33	43.0	14P0	Nomex® Semi-slick/3 Layer E89	RT7100® Type 3D	253.02	47.6
1420	Nomex® Facecloth/Batt Heavy	RT7100® Type 3D	232.00	42.6	14P2	Nomex® Semi-slick/3 Layer E89	Crosstech® Type 2C	278.50	44.5
1422	Nomex® Facecloth/Batt Heavy	Crosstech® Type 2C	245.44	40.3	14Q0	Nomex® Semi-slick/2 Layer E89	RT7100® Type 3D	271.92	41.6
1430	Nomex® Facecloth/3 Layer E89	RT7100® Type 3D	253.69	47.2	14Q2	Nomex® Semi-slick/2 Layer E89	Crosstech® Type 2C	292.22	40.1
1432	Nomex® Facecloth/3 Layer E89	Crosstech® Type 2C	267.44	42.4	14R0	Filament/Ring Spun Facecloth/ 3 Layer E89	RT7100® Type 3D	244.69	43.1
1440	Nomex® Semi-slick/2 Layer E89	RT7100® Type 3D	279.92	40.0	14R2	Filament/Ring Spun Facecloth/ 3 Layer E89	Crosstech® Type 2C	266.95	42.6
3442	Nomex® Semi-slick/2 Layer E89	Crosstech® Type 2C	303.50	37.4	14S0	Nomex® Semi-slick/3 Layer E89	RT7100® Type 3D	239.49	46.9
1470	Nomex® Semi-slick/Batt Light	RT7100® Type 3D	234.90	42.0	14S2	Nomex® Semi-slick/3 Layer E89	Crosstech® Type 2C	254.41	46.2
1472	Nomex® Semi-slick/Batt Light	Crosstech® Type 2C	236.72	41.6	14U0	Nomex® Calendered Facecloth/ 2 Layer E89	RT7100® Type 3D	273.29	41.5
147T	Nomex® Semi-slick/Batt Light	Crosstech® Type 4A	223.57	50.8	14U2	Nomex® Calendered Facecloth/ 2 Layer E89	Crosstech® Type 2C	307.53	39.4
1480	Nomex® Semi-slick/3 Layer E89	RT7100® Type 3D	261.57	45.9	14V0	Nomex® Semi-slick/Batt Light	RT7100® Type 3D	233.38	42.9
1482	Nomex® Semi-slick/3 Layer E89	Crosstech® Type 2C	283.26	43.8	14V2	Nomex® Semi-slick/Batt Light	Crosstech® Type 2C	248.09	39.7
14B0	Nomex® Semi-slick/2 Layer E89	RT7100® Type 3D	281.72	41.7	14Y0	Nomex® Semi-slick/3 Layer E89	RT7100® Type 3D	259.40	44.9
14B2	Nomex® Semi-slick/2 Layer E89	Crosstech® Type 2C	299.99	39.9	14Z0	Nomex Waffle Semi-slick/ 3D 2 Layer E89	RT7100® Type 3D	253.86	44.0
14F0	Nomex® Facecloth/Batt Light	RT7100® Type 3D	249.25	40.1	14Z2	Nomex Waffle Semi-slick/ 3D 2 Layer E89	Crosstech® Type 2C	277.90	42.8
14F2	Nomex® Facecloth/Batt Light	Crosstech® Type 2C	245.41	38.3	14ZT	Nomex Waffle Semi-slick/ 3D 2 Layer E89	Crosstech® Type 4A	236.00	46
14G0	Nomex® Semi-slick/Batt Light	RT7100® Type 3D	258.85	45.9					
14G2	Nomex® Semi-slick/Batt Light	Crosstech® Type 2C	232.27	41.1					
14H0	Meta Aramid/1 Layer Spunlace	RT7100® Type 3D	279.99	35.8					
14i0	Meta Aramid/2 Layer Spunlace	RT7100® Type 3D	276.34	39.8					

#### #20 Outer Shell – Nomex® IIIA Standard Water Repellency Rip Stop 6.0 oz

Model	Thermal Liner	Moisture Barrier	THL	TPP	Model	Thermal Liner	Moisture Barrier	THL	TPP
2000	Nomex® Facecloth/Batt Light	RT7100® Type 3D	240.03	42.0	20P0	Filament/Ring Spun Facecloth/ 3 Layer E89	RT7100® Type 3D	257.09	43.2
2002	Nomex® Facecloth/Batt Light	Crosstech® Type 2C	240.60	37.9	20R0	Filament/Ring Spun Facecloth/ 3 Layer E89	RT7100® Type 3D	252.75	40.4
2010	Nomex® Semi-slick/Batt Light	RT7100® Type 3D	234.16	40.2	20S0	Nomex® Semi-slick/3 Layer E89	RT7100® Type 3D	241.36	42.6
2012	Nomex® Semi-slick/Batt Light	Crosstech® Type 2C	265.05	39.4	20S2	Nomex® Semi-slick/3 Layer E89	Crosstech® Type 2C	271.45	40.6
2020	Nomex® Facecloth/Batt Heavy	RT7100® Type 3D	225.92	38.7	20Y0	Nomex® Semi-slick/3 Layer E89	RT7100® Type 3D	248.52	41.3
2022	Nomex® Facecloth/Batt Heavy	Crosstech® Type 2C	253.10	35.9	20Z0	Nomex Waffle Semi-slick/ 3D 2 Layer E89	RT7100® Type 3D	279.07	41.5
2030	Nomex® Facecloth/3 Layer E89	RT7100® Type 3D	258.84	41.9	20Z2	Nomex Waffle Semi-slick/ 3D 2 Layer E89	Crosstech® Type 2C	300.36	38.8
2070	Nomex® Semi-slick/Batt Light	RT7100® Type 3D	219.07	40.0					
2072	Nomex® Semi-slick/Batt Light	Crosstech® Type 2C	259.20	37.6					
2080	Nomex® Semi-slick/3 Layer E89	RT7100® Type 3D	264.05	40.3					
20J2	Meta Aramid/3 Layer Spunlace	Crosstech® Type 2C	264.27	37.7					

Continued...

## THIRD PARTY TESTED AND COMPLIANT MODEL NUMBERS

### TPPs and THLs of Available Systems (continued)

Note: War Time replacement liners for xx1x, xx4x, xx6x, xxCx, xxGx, xxMx and xxPx will be substituted until original products are again available. THL and TPP data still accurate.

#### #21 Outer Shell – Kevlar®/Nomex® Enhanced Water Repellency Rip Stop 6.0 oz

Model	Thermal Liner	Moisture Barrier	THL	TPP
2100	Nomex® Facecloth/Batt Light	RT7100® Type 3D	240.03	42.0
2102	Nomex® Facecloth/Batt Light	Crosstech® Type 2C	240.60	37.9
2110	Nomex® Semi-slick/Batt Light	RT7100® Type 3D	234.16	40.2
2112	Nomex® Semi-slick/Batt Light	Crosstech® Type 2C	265.05	39.4
2120	Nomex® Facecloth/Batt Heavy	RT7100® Type 3D	225.92	38.7
2122	Nomex® Facecloth/Batt Heavy	Crosstech® Type 2C	253.10	35.9
2130	Nomex® Facecloth/3 Layer E89	RT7100® Type 3D	258.84	41.9
2170	Nomex® Semi-slick/Batt Light	RT7100® Type 3D	219.07	40.0
2172	Nomex® Semi-slick/Batt Light	Crosstech® Type 2C	259.20	37.6
2180	Nomex® Semi-slick/3 Layer E89	RT7100® Type 3D	264.05	40.3

Model	Thermal Liner	Moisture Barrier	THL	TPP
21J2	Meta Aramid/2 Layer Spunlace	Crosstech® Type 2C	264.27	37.7
21P0	Nomex® Semi-slick/3 Layer E89	RT7100® Type 3D	257.09	43.2
21R0	Filament/Ring Spun Facecloth/ 3 Layer E89	RT7100® Type 3D	252.75	40.4
21S0	Nomex® Semi-slick/3 Layer E89	RT7100® Type 3D	241.36	42.6
21S2	Nomex® Semi-slick/3 Layer E89	Crosstech® Type 2C	271.45	40.6
21Y0	Nomex® Semi-slick/3 Layer E89	RT7100® Type 3D	248.52	41.3
21Z0	Nomex Waffle Semi-slick/ 3D 2 Layer E89	RT7100® Type 3D	279.07	41.5
21Z2	Nomex Waffle Semi-slick/ 3D 2 Layer E89	Crosstech® Type 2C	300.36	38.8

#### #24 Outer Shell – Nomex® IIIA Standard Water Repellency Duck Weave 7.5oz

Model	Thermal Liner	Moisture Barrier	THL	TPP
2400	Nomex® Facecloth/Batt Light	RT7100® Type 3D	235.97	39.9
2402	Nomex® Facecloth/Batt Light	Crosstech® Type 2C	256.41	42.2
240T	Nomex® Facecloth/Batt Light	Crosstech® Type 4A	216.12	45.9
2410	Nomex® Semi-slick/Batt Light	RT7100® Type 3D	238.81	43.4
2412	Nomex® Semi-slick/Batt Light	Crosstech® Type 2C	254.89	39.2
2420	Nomex® Facecloth/Batt Heavy	RT7100® Type 3D	227.38	43.4
2422	Nomex® Facecloth/Batt Heavy	Crosstech® Type 2C	246.45	38.0
242T	Nomex® Facecloth/Batt Heavy	Crosstech® Type 4A	227.47	42.7
2430	Nomex® Facecloth/3 Layer E89	RT7100® Type 3D	255.70	43.9
2432	Nomex® Facecloth/3 Layer E89	Crosstech® Type 2C	271.00	40.5
243T	Nomex® Facecloth/3 Layer E89	Crosstech® Type 4A	253.53	42.3
2440	Nomex® Semi-slick/2 Layer E89	RT7100® Type 3D	275.10	39.5
2442	Nomex® Semi-slick/2 Layer E89	Crosstech® Type 2C	287.64	37.2
2470	Nomex® Semi-slick/Batt Light	RT7100® Type 3D	244.00	42.1
2472	Nomex® Semi-slick/Batt Light	Crosstech® Type 2C	254.87	41.4
247T	Nomex® Semi-slick/Batt Light	Crosstech® Type 4A	233.62	46.6
2480	Nomex® Semi-slick/3 Layer E89	RT7100® Type 3D	249.84	44.7
2482	Nomex® Semi-slick/3 Layer E89	Crosstech® Type 2C	283.88	39.9
24B0	Nomex® Semi-slick/2 Layer E89	RT7100® Type 3D	288.14	41.6
24B2	Nomex® Semi-slick/2 Layer E89	Crosstech® Type 2C	288.27	36.5
24F0	Nomex® Facecloth/Batt Light	RT7100® Type 3D	244.75	40.2
24F2	Nomex® Facecloth/Batt Light	Crosstech® Type 2C	259.11	37.6
24G0	Nomex® Semi-slick/Batt Light	RT7100® Type 3D	247.40	43.3
24G2	Nomex® Semi-slick/Batt Light	Crosstech® Type 2C	224.73	41.9
24I0	Meta Aramid/2 Layer Spunlace	RT7100® Type 3D	261.84	38.8
24I2	Meta Aramid/2 Layer Spunlace	Crosstech® Type 2C	312.71	35.5
24IT	Meta Aramid/2 Layer Spunlace	Crosstech® Type 4A	272.47	40.5

Model	Thermal Liner	Moisture Barrier	THL	TPP
24M0	Nomex® Semi-slick/2 Layer E89	RT7100® Type 3D	267.51	41.1
24M2	Nomex® Semi-slick/2 Layer E89	Crosstech® Type 2C	273.29	36.5
24P0	Nomex® Semi-slick/3 Layer E89	RT7100® Type 3D	256.66	47.2
24P2	Nomex® Semi-slick/3 Layer E89	Crosstech® Type 2C	257.63	39.1
24Q0	Nomex® Semi-slick/2 Layer E89	RT7100® Type 3D	253.86	40.5
24Q2	Nomex® Semi-slick/2 Layer E89	Crosstech® Type 2C	281.42	38.0
24QT	Nomex® Semi-slick/2 Layer E89	Crosstech® Type 4A	269.95	42.9
24R0	Filament/Ring Spun Facecloth/ 3 Layer E89	RT7100® Type 3D	239.44	44.5
24R2	Filament/Ring Spun Facecloth/ 3 Layer E89	Crosstech® Type 2C	278.60	39.7
24S0	Nomex® Semi-slick/3 Layer E89	RT7100® Type 3D	240.99	44.8
24S2	Nomex® Semi-slick/3 Layer E89	Crosstech® Type 2C	258.95	43.5
24ST	Nomex® Semi-slick/3 Layer E89	Crosstech® Type 4A	266.91	45.7
24U0	Nomex® Calendered Facecloth/ 2 Layer E89	RT7100® Type 3D	297.62	41.5
24U2	Nomex® Calendered Facecloth/ 2 Layer E89	Crosstech® Type 2C	334.13	38.5
24V0	Nomex® Semi-slick/Batt Light	RT7100® Type 3D	215.90	42.6
24V2	Nomex® Semi-slick/Batt Light	Crosstech® Type 2C	248.37	36.8
24Y0	Nomex® Semi-slick/3 Layer E89	RT7100® Type 3D	245.57	42.7
24Y2	Nomex Waffle Semi-slick/ 3D 2 Layer E89	Crosstech® Type 2C	265.28	39.9
24Z0	Nomex Waffle Semi-slick/ 3D 2 Layer E89	RT7100® Type 3D	250.53	42.2
24Z2	Nomex Waffle Semi-slick/ 3D 2 Layer E89	Crosstech® Type 2C	292.44	37.4
24ZT	Nomex Waffle Semi-slick/ 3D 2 Layer E89	Crosstech® Type 4A	258.10	40.9

## THIRD PARTY TESTED AND COMPLIANT MODEL NUMBERS

### TPPs and THLs of Available Systems (continued)

Note: War Time replacement liners for xx1x, xx4x, xx6x, xxCx, xxGx, xxMx and xxPx will be substituted until original products are again available. THL and TPP data still accurate.

#### #25 Outer Shell – Basofil®/Kevlar® Enhanced Water Repellency Rip Stop 7.5 oz

Model	Thermal Liner	Moisture Barrier	THL	TPP
2500	Nomex® Facecloth/Batt Light	RT7100® Type 3D	229.49	49.9
2502	Nomex® Facecloth/Batt Light	Crosstech® Type 2C	242.09	47.3
250T	Nomex® Facecloth/Batt Light	Crosstech® Type 4A	216.06	55.5
2510	Nomex® Semi-slick/Batt Light	RT7100® Type 3D	231.07	47.0
2512	Nomex® Semi-slick/Batt Light	Crosstech® Type 2C	262.00	48.0
2520	Nomex® Facecloth/Batt Heavy	RT7100® Type 3D	225.56	47.4
2522	Nomex® Facecloth/Batt Heavy	Crosstech® Type 2C	254.66	44.8
252T	Nomex® Facecloth/Batt Heavy	Crosstech® Type 4A	232.91	51.4
2530	Nomex® Facecloth/3 Layer E89	RT7100® Type 3D	262.99	52.5
2532	Nomex® Facecloth/3 Layer E89	Crosstech® Type 2C	283.00	47.8
253T	Nomex® Facecloth/3 Layer E89	Crosstech® Type 4A	253.56	50.4
2540	Nomex® Semi-slick/2 Layer E89	RT7100® Type 3D	282.74	44.3
2542	Nomex® Semi-slick/2 Layer E89	Crosstech® Type 2C	291.51	45.0
2570	Nomex® Semi-slick/Batt Light	RT7100® Type 3D	234.70	50.4
2572	Nomex® Semi-slick/Batt Light	Crosstech® Type 2C	210.53	48.7
257T	Nomex® Semi-slick/Batt Light	Crosstech® Type 4A	228.35	57.2
2580	Nomex® Semi-slick/3 Layer E89	RT7100® Type 3D	263.51	51.0
2582	Nomex® Semi-slick/3 Layer E89	Crosstech® Type 2C	269.41	47.2
25B0	Nomex® Semi-slick/2 Layer E89	RT7100® Type 3D	278.80	46.5
25B2	Nomex® Semi-slick/2 Layer E89	Crosstech® Type 2C	311.39	46.9
25F0	Nomex® Facecloth/Batt Light	RT7100® Type 3D	233.23	50.2
25F2	Nomex® Facecloth/Batt Light	Crosstech® Type 2C	270.53	49.8
25G0	Nomex® Semi-slick/Batt Light	RT7100® Type 3D	211.96	50.6
25G2	Nomex® Semi-slick/Batt Light	Crosstech® Type 2C	227.07	48.4
25H0	Meta Aramid/1 Layer Spunlace	RT7100® Type 3D	300.17	39.0
25H2	Meta Aramid/1 Layer Spunlace	Crosstech® Type 2C	310.28	37.3
25i0	Meta Aramid/2 Layer Spunlace	RT7100® Type 3D	263.10	45.0
25i2	Meta Aramid/2 Layer Spunlace	Crosstech® Type 2C	300.79	42.7

Model	Thermal Liner	Moisture Barrier	THL	TPP
25iT	Meta Aramid/2 Layer Spunlace	Crosstech® Type 4A	271.02	49.0
25J2	Meta Aramid/2 Layer Spunlace	Crosstech® Type 2C	264.58	48.8
25M0	Nomex® Semi-slick/2 Layer E89	RT7100® Type 3D	282.47	43.9
25M2	Nomex® Semi-slick/2 Layer E89	Crosstech® Type 2C	295.31	44.2
25P0	Nomex® Semi-slick/3 Layer E89	RT7100® Type 3D	260.53	52.9
25P2	Nomex® Semi-slick/3 Layer E89	Crosstech® Type 2C	281.70	48.5
25Q0	Nomex® Semi-slick/2 Layer E89	RT7100® Type 3D	262.94	46.2
25Q2	Nomex® Semi-slick/2 Layer E89	Crosstech® Type 2C	278.04	45.8
25QT	Nomex® Semi-slick/2 Layer E89	Crosstech® Type 4A	270.98	52.6
25R0	Filament/Ring Spun Facecloth/ 3 Layer E89	RT7100® Type 3D	251.48	48.3
25R2	Filament/Ring Spun Facecloth/ 3 Layer E89	Crosstech® Type 2C	287.29	48.0
25S0	Nomex® Semi-slick/3 Layer E89	RT7100® Type 3D	246.95	52.1
25S2	Nomex® Semi-slick/3 Layer E89	Crosstech® Type 2C	263.64	50.4
25ST	Nomex® Semi-slick/3 Layer E89	Crosstech® Type 4A	266.27	54.7
25U0	Nomex® Calendered Facecloth/ 2 Layer E89	RT7100® Type 3D	298.57	42.5
25U2	Nomex® Calendered Facecloth/ 2 Layer E89	Crosstech® Type 2C	309.39	40.5
25V0	Nomex® Semi-slick/Batt Light	RT7100® Type 3D	235.66	49.0
25V2	Nomex® Semi-slick/Batt Light	Crosstech® Type 2C	246.25	45.3
25Y0	Nomex® Semi-slick/3 Layer E89	RT7100® Type 3D	254.60	50.5
25Z0	Nomex Waffle Semi-slick/ 3D 2 Layer E89	RT7100® Type 3D	253.44	47.7
25Z2	Nomex Waffle Semi-slick/ 3D 2 Layer E89	Crosstech® Type 2C	286.82	47.0
25ZT	Nomex Waffle Semi-slick/ 3D 2 Layer E89	Crosstech® Type 4A	239.50	48.6

#### #32 Outer Shell – Pbi™/Kevlar® Enhanced Water Repellency Rip Stop 7.5 oz

Model	Thermal Liner	Moisture Barrier	THL	TPP
3200	Nomex® Facecloth/Batt Light	RT7100® Type 3D	240.73	42.6
3202	Nomex® Facecloth/Batt Light	Crosstech® Type 2C	225.41	40.8
320T	Nomex® Facecloth/Batt Light	Crosstech® Type 4A	219.90	46.2
3210	Nomex® Semi-slick/Batt Light	RT7100® Type 3D	237.78	43.8
3212	Nomex® Semi-slick/Batt Light	Crosstech® Type 2C	273.02	39.5
321H	Nomex® Semi-slick/Batt Light	Chempak®	213.33	47.6
3220	Nomex® Facecloth/Batt Heavy	RT7100® Type 3D	216.74	41.4
3222	Nomex® Facecloth/Batt Heavy	Crosstech® Type 2C	229.75	39.1
322T	Nomex® Facecloth/Batt Heavy	Crosstech® Type 4A	216.79	44.3
3230	Nomex® Facecloth/3 Layer E89	RT7100® Type 3D	237.37	42.8
3232	Nomex® Facecloth/3 Layer E89	Crosstech® Type 2C	265.74	43.3
323T	Nomex® Facecloth/3 Layer E89	Crosstech® Type 4A	242.11	45.9
3240	Nomex® Semi-slick/2 Layer E89	RT7100® Type 3D	283.24	38.1
3242	Nomex® Semi-slick/2 Layer E89	Crosstech® Type 2C	266.01	37.6
3270	Nomex® Semi-slick/Batt Light	RT7100® Type 3D	234.90	43.8
3272	Nomex® Semi-slick/Batt Light	Crosstech® Type 2C	210.45	41.2
327T	Nomex® Semi-slick/Batt Light	Crosstech® Type 4A	220.03	47.8
3280	Nomex® Semi-slick/3 Layer E89	RT7100® Type 3D	247.83	44.2
3282	Nomex® Semi-slick/3 Layer E89	Crosstech® Type 2C	276.80	41.0
32B0	Nomex® Semi-slick/2 Layer E89	RT7100® Type 3D	262.58	40.4
32B2	Nomex® Semi-slick/2 Layer E89	Crosstech® Type 2C	285.86	37.1
32F0	Nomex® Facecloth/Batt Light	RT7100® Type 3D	222.10	42.9
32F2	Nomex® Facecloth/Batt Light	Crosstech® Type 2C	240.38	37.8
32G0	Nomex® Semi-slick/Batt Light	RT7100® Type 3D	210.85	44.0
32G2	Nomex® Semi-slick/Batt Light	Crosstech® Type 2C	217.21	41.5
32i0	Meta Aramid/2 Layer Spunlace	RT7100® Type 3D	263.80	39.0
32i2	Meta Aramid/2 Layer Spunlace	Crosstech® Type 2C	289.93	36.6
32iT	Meta Aramid/2 Layer Spunlace	Crosstech® Type 4A	252.39	40.5

Model	Thermal Liner	Moisture Barrier	THL	TPP
32M0	Nomex® Semi-slick/2 Layer E89	RT7100® Type 3D	259.12	39.1
32M2	Nomex® Semi-slick/2 Layer E89	Crosstech® Type 2C	276.40	35.2
32P0	Nomex® Semi-slick/3 Layer E89	RT7100® Type 3D	245.70	45.9
32P2	Nomex® Semi-slick/3 Layer E89	Crosstech® Type 2C	248.27	40.7
32Q0	Nomex® Semi-slick/2 Layer E89	RT7100® Type 3D	243.07	42.1
32Q2	Nomex® Semi-slick/2 Layer E89	Crosstech® Type 2C	262.73	40.4
32QT	Nomex® Semi-slick/2 Layer E89	Crosstech® Type 4A	257.53	44.2
32R0	Filament/Ring Spun Facecloth/ 3 Layer E89	RT7100® Type 3D	238.48	43.8
32R2	Filament/Ring Spun Facecloth/ 3 Layer E89	Crosstech® Type 2C	244.84	42.6
32S0	Nomex® Waffle Semi-slick/3 Layer E89	RT7100® Type 3D	227.58	45.1
32S2	Nomex® Waffle Semi-slick/3 Layer E89	Crosstech® Type 2C	238.64	42.8
32ST	Nomex® Waffle Semi-slick/3 Layer E89	Crosstech® Type 4A	258.35	44.7
32U0	Nomex® Calendered Facecloth/ 2 Layer E89	RT7100® Type 3D	287.71	41.3
32U2	Nomex® Calendered Facecloth/ 2 Layer E89	Crosstech® Type 2C	309.63	35.6
32V0	Nomex® Semi-slick/Batt Light	RT7100® Type 3D	223.42	43.5
32V2	Nomex® Semi-slick/Batt Light	Crosstech® Type 2C	228.99	38.7
32Y0	Nomex® Semi-slick/3 Layer E89	RT7100® Type 3D	241.11	43.3
32Z0	Nomex Waffle Semi-slick/ 3D 2 Layer E89	RT7100® Type 3D	241.50	42.1
32Z2	Nomex Waffle Semi-slick/ 3D 2 Layer E89	Crosstech® Type 2C	271.16	39.9
32ZT	Nomex Waffle Semi-slick/ 3D 2 Layer E89	Crosstech® Type 2C	253.86	44.9
32ZH	Nomex Waffle Semi-slick/ 3D 2 Layer E89	Chempak®	236.86	40.1

## THIRD PARTY TESTED AND COMPLIANT MODEL NUMBERS

### TPPs and THLs of Available Systems (continued)

Note: War Time replacement liners for xx1x, xx4x, xx6x, xxCx, xxGx, xxMx and xxPx will be substituted until original products are again available. THL and TPP data still accurate.

#### #33 Outer Shell – PBO™ Technora Enhanced Water Repellency Twill 7.7oz

Model	Thermal Liner	Moisture Barrier	THL	TPP
3300	Nomex® Facecloth/Batt Light	RT7100® Type 3D	212.06	44.1
3302	Nomex® Facecloth/Batt Light	Crosstech® Type 2C	229.17	42.9
330T	Nomex® Facecloth/Batt Light	Crosstech® Type 4A	211.17	45.6
3310	Nomex® Semi-slick/Batt Light	RT7100® Type 3D	243.97	49.5
3312	Nomex® Semi-slick/Batt Light	Crosstech® Type 2C	216.44	43.8
3320	Nomex® Facecloth/Batt Heavy	RT7100® Type 3D	210.58	41.2
3322	Nomex® Facecloth/Batt Heavy	Crosstech® Type 2C	210.19	41.5
332T	Nomex® Facecloth/Batt Heavy	Crosstech® Type 4A	230.33	41.4
3330	Nomex® Facecloth/3 Layer E89	RT7100® Type 3D	242.72	47.1
3332	Nomex® Facecloth/3 Layer E89	Crosstech® Type 2C	252.94	44.1
333T	Nomex® Facecloth/3 Layer E89	Crosstech® Type 4A	242.15	42.8
3340	Nomex® Semi-slick/2 Layer E89	RT7100® Type 3D	278.77	37.5
3342	Nomex® Semi-slick/2 Layer E89	Crosstech® Type 2C	292.64	37.4
3370	Nomex® Semi-slick/Batt Light	RT7100® Type 3D	221.01	42.1
3372	Nomex® Semi-slick/Batt Light	Crosstech® Type 2C	224.42	42.9
337T	Nomex® Semi-slick/Batt Light	Crosstech® Type 4A	221.25	46.6
3380	Nomex® Semi-slick/3 Layer E89	RT7100® Type 3D	260.48	44.2
3382	Nomex® Semi-slick/3 Layer E89	Crosstech® Type 2C	269.31	43.0
33i0	Meta Aramid/2 Layer Spunlace	RT7100® Type 3D	268.99	38.9
33iT	Meta Aramid/2 Layer Spunlace	Crosstech® Type 4A	242.83	41.4

Model	Thermal Liner	Moisture Barrier	THL	TPP
33i2	Meta Aramid/2 Layer Spunlace	Crosstech® Type 2C	294.87	36.1
33J0	Meta Aramid/3 Layer Spunlace	RT7100® Type 3D	240.75	41.2
33LT	Meta Aramid/2 Layer Spunlace	Crosstech® Type 4A	252.20	40.3
33P0	Nomex® Semi-slick/3 Layer E89	RT7100® Type 3D	251.42	42.3
33P2	Nomex® Semi-slick/3 Layer E89	Crosstech® Type 2C	247.48	44.4
33Q0	Nomex® Semi-slick/2 Layer E89	RT7100® Type 3D	233.94	40.6
33Q2	Nomex® Semi-slick/2 Layer E89	Crosstech® Type 2C	274.99	40.1
33QT	Nomex® Semi-slick/2 Layer E89	Crosstech® Type 4A	260.81	39.3
33R0	Filament/Ring Spun Facecloth/ 3 Layer E89	RT7100® Type 3D	263.20	42.1
33R2	Filament/Ring Spun Facecloth/ 3 Layer E89	Crosstech® Type 2C	255.75	40.9
33S0	Nomex® Semi-slick/3 Layer E89	RT7100® Type 3D	237.22	45.7
33S2	Nomex® Semi-slick/3 Layer E89	Crosstech® Type 2C	258.96	44.1
33ST	Nomex® Semi-slick/3 Layer E89	Crosstech® Type 4A	262.15	46.4
33Z0	Nomex Waffle Semi-slick/ 3D 2 Layer E89	RT7100® Type 3D	264.89	40.9
33Z2	Nomex Waffle Semi-slick/ 3D 2 Layer E89	Crosstech® Type 2C	267.91	36.8
33ZT	Nomex Waffle Semi-slick/ 3D 2 Layer E89	Crosstech® Type 4A	242.30	41.4

#### #34 Outer Shell – Kevlar® /Nomex® Enhanced Water Repellency Rip Stop 7.0oz

Model	Thermal Liner	Moisture Barrier	THL	TPP
3400	Nomex® Facecloth/Batt Light	RT7100® Type 3D	250.94	41.2
3402	Nomex® Facecloth/Batt Light	Crosstech® Type 2C	253.02	43.0
3410	Nomex® Semi-slick/Batt Light	RT7100® Type 3D	247.53	42.2
3412	Nomex® Semi-slick/Batt Light	Crosstech® Type 2C	253.33	43.0
3420	Nomex® Facecloth/Batt Heavy	RT7100® Type 3D	232.00	42.6
3422	Nomex® Facecloth/Batt Heavy	Crosstech® Type 2C	245.44	40.3
3430	Nomex® Facecloth/3 Layer E89	RT7100® Type 3D	253.69	47.2
3432	Nomex® Facecloth/3 Layer E89	Crosstech® Type 2C	267.44	42.4
3440	Nomex® Semi-slick/2 Layer E89	RT7100® Type 3D	279.92	40.0
3442	Nomex® Semi-slick/2 Layer E89	Crosstech® Type 2C	303.50	37.4
3470	Nomex® Semi-slick/Batt Light	RT7100® Type 3D	234.90	42.0
3472	Nomex® Semi-slick/Batt Light	Crosstech® Type 2C	236.72	41.6
347T	Nomex® Semi-slick/Batt Light	Crosstech® Type 4A	223.57	50.8
3480	Nomex® Semi-slick/3 Layer E89	RT7100® Type 3D	261.57	45.9
3482	Nomex® Semi-slick/3 Layer E89	Crosstech® Type 2C	283.26	43.8
34B0	Nomex® Semi-slick/2 Layer E89	RT7100® Type 3D	281.72	41.7
34B2	Nomex® Semi-slick/2 Layer E89	Crosstech® Type 2C	299.99	39.9
34F0	Nomex® Facecloth/Batt Light	RT7100® Type 3D	249.25	40.1
34F2	Nomex® Facecloth/Batt Light	Crosstech® Type 2C	245.41	38.3
34G0	Nomex® Semi-slick/Batt Light	RT7100® Type 3D	258.85	45.9
34G2	Nomex® Semi-slick/Batt Light	Crosstech® Type 2C	232.27	41.1
34H0	Meta Aramid/1 Layer Spunlace	RT7100® Type 3D	279.99	35.8
34i0	Meta Aramid/2 Layer Spunlace	RT7100® Type 3D	276.34	39.8

Model	Thermal Liner	Moisture Barrier	THL	TPP
34i2	Meta Aramid/2 Layer Spunlace	Crosstech® Type 2C	302.83	37.7
34M0	Nomex® Semi-slick/2 Layer E89	RT7100® Type 3D	278.25	38.7
34M2	Nomex® Semi-slick/2 Layer E89	Crosstech® Type 2C	294.23	39.6
34P0	Nomex® Semi-slick/3 Layer E89	RT7100® Type 3D	253.02	47.6
34P2	Nomex® Semi-slick/3 Layer E89	Crosstech® Type 2C	278.50	44.5
34Q0	Nomex® Semi-slick/2 Layer E89	RT7100® Type 3D	271.92	41.6
34Q2	Nomex® Semi-slick/2 Layer E89	Crosstech® Type 2C	292.22	40.1
34R0	Filament/Ring Spun Facecloth/ 3 Layer E89	RT7100® Type 3D	244.69	43.1
34R2	Filament/Ring Spun Facecloth/ 3 Layer E89	Crosstech® Type 2C	266.95	42.6
34S0	Nomex® Semi-slick/3 Layer E89	RT7100® Type 3D	239.49	46.9
34S2	Nomex® Semi-slick/3 Layer E89	Crosstech® Type 2C	254.41	46.2
34U0	Nomex® Calendered Facecloth/ 2 Layer E89	RT7100® Type 3D	273.29	41.5
34U2	Nomex® Calendered Facecloth/ 2 Layer E89	Crosstech® Type 2C	307.53	39.4
34V0	Nomex® Semi-slick/Batt Light	RT7100® Type 3D	233.38	42.9
34V2	Nomex® Semi-slick/Batt Light	Crosstech® Type 2C	248.09	39.7
34Y0	Nomex® Semi-slick/3 Layer E89	RT7100® Type 3D	259.40	44.9
34Z0	Nomex Waffle Semi-slick/ 3D 2 Layer E89	RT7100® Type 3D	253.86	44.0
34Z2	Nomex Waffle Semi-slick/ 3D 2 Layer E89	Crosstech® Type 2C	277.90	42.8
34ZT	Nomex Waffle Semi-slick/ 3D 2 Layer E89	Crosstech® Type 4A	236.00	46

**THIRD PARTY TESTED AND COMPLIANT MODEL NUMBERS**

**TPPs and THLs of Available Systems (continued)**

Note: War Time replacement liners for xx1x, xx4x, xx6x, xxCx, xxGx, xxMx and xxPx will be substituted until original products are again available. THL and TPP data still accurate.

**#35 Outer Shell – Basofil®/Kevlar® Enhanced Water Repellency Twill with Kevlar®/Zylon Crosshatch 7.72 oz**

Model	Thermal Liner	Moisture Barrier	THL	TPP
3500	Nomex® Facecloth/Batt Light	RT7100® Type 3D	245.76	48.3
3502	Nomex® Facecloth/Batt Light	Crosstech® Type 2C	240.90	44.8
3510	Nomex® Semi-slick/Batt Light	RT7100® Type 3D	236.25	48.0
3512	Nomex® Semi-slick/Batt Light	Crosstech® Type 2C	254.70	44.5
3520	Nomex® Facecloth/Batt Heavy	RT7100® Type 3D	222.52	43.2
3522	Nomex® Facecloth/Batt Heavy	Crosstech® Type 2C	237.76	42.8
3530	Nomex® Facecloth/3 Layer E89	RT7100® Type 3D	259.34	46.7
3532	Nomex® Facecloth/3 Layer E89	Crosstech® Type 2C	273.82	44.1
3540	Nomex® Semi-slick/2 Layer E89	RT7100® Type 3D	277.46	43.6
3542	Nomex® Semi-slick/2 Layer E89	Crosstech® Type 2C	318.60	41.0
3570	Nomex® Semi-slick/Batt Light	RT7100® Type 3D	235.04	47.9
3572	Nomex® Semi-slick/Batt Light	Crosstech® Type 2C	230.88	47.4
3580	Nomex® Semi-slick/3 Layer E89	RT7100® Type 3D	252.52	45.7
3582	Nomex® Semi-slick/3 Layer E89	Crosstech® Type 2C	272.18	42.6
35B0	Nomex® Semi-slick/2 Layer E89	RT7100® Type 3D	271.53	43.9
35B2	Nomex® Semi-slick/2 Layer E89	Crosstech® Type 2C	306.35	43.4
35F0	Nomex® Facecloth/Batt Light	RT7100® Type 3D	225.21	47.7
35F2	Nomex® Facecloth/Batt Light	Crosstech® Type 2C	258.73	46.6

Model	Thermal Liner	Moisture Barrier	THL	TPP
35G0	Nomex® Semi-slick/Batt Light	RT7100® Type 3D	244.11	52.6
35G2	Nomex® Semi-slick/Batt Light	Crosstech® Type 2C	226.22	51.2
35H0	Meta Aramid/1 Layer Spunlace	RT7100® Type 3D	289.22	35.5
35H2	Meta Aramid/1 Layer Spunlace	Crosstech® Type 2C	292.46	35.4
35I0	Meta Aramid/2 Layer Spunlace	RT7100® Type 3D	263.00	41.0
35I2	Meta Aramid/2 Layer Spunlace	Crosstech® Type 2C	301.78	40.8
35M0	Nomex® Semi-slick/2 Layer E89	RT7100® Type 3D	294.97	43.9
35M2	Nomex® Semi-slick/2 Layer E89	Crosstech® Type 2C	290.80	42.2
35P0	Nomex® Semi-slick/3 Layer E89	RT7100® Type 3D	246.05	47.8
35P2	Nomex® Semi-slick/3 Layer E89	Crosstech® Type 2C	296.00	46.3
35Q0	Nomex® Semi-slick/2 Layer E89	RT7100® Type 3D	264.51	43.5
35Q2	Nomex® Semi-slick/2 Layer E89	Crosstech® Type 2C	284.66	43.7
35R0	Filament/Ring Spun Facecloth/ 3 Layer E89	RT7100® Type 3D	254.42	45.6
35R2	Filament/Ring Spun Facecloth/ 3 Layer E89	Crosstech® Type 2C	293.70	43.5
35S0	Nomex® Semi-slick/3 Layer E89	RT7100® Type 3D	245.74	49.0
35S2	Nomex® Semi-slick/3 Layer E89	Crosstech® Type 2C	265.74	47.1
35V0	Nomex® Semi-slick/Batt Light	RT7100® Type 3D	236.67	46.3
35V2	Nomex® Semi-slick/Batt Light	Crosstech® Type 2C	244.06	42.5

*Continued...*

**THIRD PARTY TESTED AND COMPLIANT MODEL NUMBERS**

**TPPs and THLs of Available Systems (continued)**

Note: War Time replacement liners for xx1x, xx4x, xx6x, xxCx, xxGx, xxMx and xxPx will be substituted until original products are again available. THL and TPP data still accurate.

**#42 Outer Shell – Pbi™ Matrix Enhanced Water Repellency Rip Stop 7.5 oz**

Model	Thermal Liner	Moisture Barrier	THL	TPP
4200	Nomex® Facecloth/Batt Light	RT7100® Type 3D	224.13	41.7
4202	Nomex® Facecloth/Batt Light	Crosstech®/ Type 2C	232.11	40.8
420T	Nomex® Facecloth/Batt Light	Crosstech®/ Type 4A	216.40	46.6
4210	Nomex® Semi-slick/Batt Light	RT7100® Type 3D	220.81	39.1
4212	Nomex® Semi-slick/Batt Light	Crosstech®/ Type 2C	235.00	39.4
4220	Nomex® Facecloth/Batt Heavy	RT7100® Type 3D	208.18	42.8
4222	Nomex® Facecloth/Batt Heavy	Crosstech®/ Type 2C	231.55	39.8
422T	Nomex® Facecloth/Batt Heavy	Crosstech®/ Type 4A	215.32	44.6
4230	Nomex® Facecloth/3 Layer E89	RT7100® Type 3D	236.87	44.9
4232	Nomex® Facecloth/3 Layer E89	Crosstech®/ Type 2C	241.95	38.7
423T	Nomex® Facecloth/3 Layer E89	Crosstech®/ Type 4A	235.33	48.1
4240	Nomex® Semi-slick/2 Layer E89	RT7100® Type 3D	267.10	38.6
4242	Nomex® Semi-slick/2 Layer E89	Crosstech®/ Type 2C	278.60	38.5
4270	Nomex® Semi-slick/Batt Light	RT7100® Type 3D	228.30	41.8
4272	Nomex® Semi-slick/Batt Light	Crosstech®/ Type 2C	206.45	41.9
427T	Nomex® Semi-slick/Batt Light	Crosstech®/ Type 4A	214.87	45.8
4280	Nomex® Semi-slick/3 Layer E89	RT7100® Type 3D	246.05	41.4
4282	Nomex® Semi-slick/3 Layer E89	Crosstech®/ Type 2C	257.93	37.3
42B0	Nomex® Semi-slick/2 Layer E89	RT7100® Type 3D	264.81	40.6
42B2	Nomex® Semi-slick/2 Layer E89	Crosstech®/ Type 2C	291.31	36.5
42F0	Nomex® Facecloth/Batt Light	RT7100® Type 3D	221.52	43.7
42F2	Nomex® Facecloth/Batt Light	Crosstech®/ Type 2C	253.49	38.7
42G0	Nomex® Semi-slick/Batt Light	RT7100® Type 3D	234.00	44.0
42G2	Nomex® Semi-slick/Batt Light	Crosstech®/ Type 2C	211.50	40.2
42I0	Meta Aramid/2 Layer Spunlace	RT7100® Type 3D	260.23	37.3
42I2	Meta Aramid/2 Layer Spunlace	Crosstech®/ Type 2C	284.98	35.7
42IT	Meta Aramid/2 Layer Spunlace	Crosstech®/ Type 4A	247.49	41.4
42J0	Meta Aramid/3 Layer Spunlace	RT7100® Type 3D	237.44	43.5
42J2	Meta Aramid/3 Layer Spunlace	Crosstech®/ Type 2C	229.37	40.9

Model	Thermal Liner	Moisture Barrier	THL	TPP
42LT	Meta Aramid/2 Layer Spunlace	Crosstech®/ Type 4A	257.10	40.1
42M0	Nomex® Semi-slick/2 Layer E89	RT7100® Type 3D	236.87	38.4
42M2	Nomex® Semi-slick/2 Layer E89	Crosstech®/ Type 2C	262.11	36.2
42P0	Nomex® Semi-slick/3 Layer E89	RT7100® Type 3D	245.69	43.5
42P2	Nomex® Semi-slick/3 Layer E89	Crosstech®/ Type 2C	276.00	39.5
42Q0	Nomex® Semi-slick/2 Layer E89	RT7100® Type 3D	254.30	40.9
42Q2	Nomex® Semi-slick/2 Layer E89	Crosstech®/ Type 2C	258.19	39.6
42QT	Nomex® Semi-slick/2 Layer E89	Crosstech®/ Type 2C	243.67	43.8
42QH	Nomex® Semi-slick/2 Layer E89	Chempak®	235.13	43.6
42R0	Filament/Ring Spun Facecloth/ 3 Layer E89	RT7100® Type 3D	242.01	42.4
42R2	Filament/Ring Spun Facecloth/ 3 Layer E89	Crosstech® Type 2C	261.81	36.7
42S0	Nomex® Semi-slick/3 Layer E89	RT7100® Type 3D	230.12	44.3
42S2	Nomex® Semi-slick/3 Layer E89	Crosstech®/ Type 2C	253.75	42.2
42ST	Nomex® Semi-slick/3 Layer E89	Crosstech®/ Type 4A	239.90	48
42U0	Nomex® Calendered Facecloth/ 2 Layer E89	RT7100® Type 3D	270.73	38.5
42U2	Nomex® Calendered Facecloth/ 2 Layer E89	Crosstech® Type 2C	291.38	36.2
42V0	Nomex® Semi-slick/Batt Light	RT7100® Type 3D	216.92	43.4
42V2	Nomex® Semi-slick/Batt Light	Crosstech®/ Type 2C	244.30	39.9
42Y0	Nomex® Semi-slick/3 Layer E89	RT7100® Type 3D	250.67	42.4
42Z0	Nomex Waffle Semi-slick/ 3D 2 Layer E89	RT7100® Type 3D	245.15	43.3
42Z2	Nomex Waffle Semi-slick/ 3D 2 Layer E89	Crosstech® Type 2C	260.02	38.6
42ZT	Nomex Waffle Semi-slick/ 3D 2 Layer E89	Crosstech® Type 4A	256.36	45.3

## THIRD PARTY TESTED AND COMPLIANT MODEL NUMBERS

### TPPs and THLs of Available Systems (continued)

Note: War Time replacement liners for xx1x, xx4x, xx6x, xxCx, xxGx, xxMx and xxPx will be substituted until original products are again available. THL and TPP data still accurate.

#### #43 Outer Shell – Pbi™ Matrix Enhanced Water Repellency Rip Stop 7.2 oz

Model	Thermal Liner	Moisture Barrier	THL	TPP	Model	Thermal Liner	Moisture Barrier	THL	TPP
4300	Nomex® Facecloth/Batt Light	RT7100® Type 3D	234.32	43.7	43I0	Meta Aramid/2 Layer Spunlace	RT7100® Type 3D	270.87	39.8
4302	Nomex® Facecloth/Batt Light	Crosstech® Type 2C	226.44	39.2	43I2	Meta Aramid/2 Layer Spunlace	Crosstech® Type 2C	290.67	36.6
4310	Nomex® Semi-slick/Batt Light	RT7100® Type 3D	235.61	39.7	43J0	Meta Aramid/3 Layer Spunlace	RT7100® Type 3D	241.89	41.5
4312	Nomex® Semi-slick/Batt Light	Crosstech® Type 2C	234.22	37.2	43J2	Meta Aramid/3 Layer Spunlace	Crosstech® Type 2C	270.70	42.6
4320	Nomex® Facecloth/Batt Heavy	RT7100® Type 3D	213.52	42.6	43M0	Nomex® Semi-slick/2 Layer E89	RT7100® Type 3D	261.18	37.3
4322	Nomex® Facecloth/Batt Heavy	Crosstech® Type 2C	244.60	38.6	43M2	Nomex® Semi-slick/2 Layer E89	Crosstech® Type 2C	259.61	35.9
4330	Nomex® Facecloth/3 Layer E89	RT7100® Type 3D	254.63	43.2	43P0	Nomex® Semi-slick/3 Layer E89	RT7100® Type 3D	249.45	42.6
4332	Nomex® Facecloth/3 Layer E89	Crosstech® Type 2C	262.08	40.4	43P2	Nomex® Semi-slick/3 Layer E89	Crosstech® Type 2C	265.25	41.5
4340	Nomex® Semi-slick/2 Layer E89	RT7100® Type 3D	264.41	35.2	43Q0	Nomex® Semi-slick/2 Layer E89	RT7100® Type 3D	262.32	37.3
4342	Nomex® Semi-slick/2 Layer E89	Crosstech® Type 2C	292.97	36.7	43Q2	Nomex® Semi-slick/2 Layer E89	Crosstech® Type 2C	267.05	39.0
4370	Nomex® Semi-slick/Batt Light	RT7100® Type 3D	236.70	41.5	43R0	Filament/Ring Spun Facecloth/ 3 Layer E89	RT7100® Type 3D	248.16	42.4
4372	Nomex® Semi-slick/Batt Light	Crosstech® Type 2C	212.50	39.0	43R2	Filament/Ring Spun Facecloth/ 3 Layer E89	Crosstech® Type 2C	278.12	41.8
4380	Nomex® Semi-slick/3 Layer E89	RT7100® Type 3D	241.20	44.2	43S0	Nomex® Semi-slick/3 Layer E89	RT7100® Type 3D	235.18	43.9
4382	Nomex® Semi-slick/3 Layer E89	Crosstech® Type 2C	264.19	41.0	43S2	Nomex® Semi-slick/3 Layer E89	Crosstech® Type 2C	256.86	44.3
43B0	Nomex® Semi-slick/2 Layer E89	RT7100® Type 3D	266.65	39.5	43U0	Nomex® Calendered Facecloth/ 2 Layer E89	RT7100® Type 3D	291.01	38.5
43B2	Nomex® Semi-slick/2 Layer E89	Crosstech® Type 2C	287.99	36.2	43U2	Nomex® Calendered Facecloth/ 2 Layer E89	Crosstech® Type 2C	316.19	38.6
43F0	Nomex® Facecloth/Batt Light	RT7100® Type 3D	229.74	38.7	43V0	Nomex® Semi-slick/Batt Light	RT7100® Type 3D	235.16	41.2
43F2	Nomex® Facecloth/Batt Light	Crosstech® Type 2C	243.61	38.8	43V2	Nomex® Semi-slick/Batt Light	Crosstech® Type 2C	255.15	39.7
43G0	Nomex® Semi-slick/Batt Light	RT7100® Type 3D	214.76	42.6					
43G2	Nomex® Semi-slick/Batt Light	Crosstech® Type 2C	230.79	41.3					

Continued...

**THIRD PARTY TESTED AND COMPLIANT MODEL NUMBERS**

**TPPs and THLs of Available Systems (continued)**

Note: War Time replacement liners for xx1x, xx4x, xx6x, xxCx, xxGx, xxMx and xxPx will be substituted until original products are again available. THL and TPP data still accurate.

**#44 Outer Shell – Kevlar®/Nomex® Enhanced Water Repellency Rip Stop 7.0 oz**

Model	Thermal Liner	Moisture Barrier	THL	TPP
4400	Nomex® Facecloth/Batt Light	RT7100® Type 3D	229.84	43.0
4402	Nomex® Facecloth/Batt Light	Crosstech® Type 2C	215.78	41.4
4410	Nomex® Semi-slick/Batt Light	RT7100® Type 3D	238.65	41.3
4412	Nomex® Semi-slick/Batt Light	Crosstech® Type 2C	253.14	37.3
4420	Nomex® Facecloth/Batt Heavy	RT7100® Type 3D	213.31	39.1
4422	Nomex® Facecloth/Batt Heavy	Crosstech® Type 2C	228.37	37.7
4430	Nomex® Facecloth/3 Layer E89	RT7100® Type 3D	226.66	43.9
4432	Nomex® Facecloth/3 Layer E89	Crosstech® Type 2C	280.24	42.2
4440	Nomex® Semi-slick/2 Layer E89	RT7100® Type 3D	272.42	38.3
4442	Nomex® Semi-slick/2 Layer E89	Crosstech® Type 2C	298.38	38.9
4472	Nomex® Semi-slick/Batt Light	Crosstech® Type 2C	229.05	40.6
4480	Nomex® Semi-slick/3 Layer E89	RT7100® Type 3D	247.87	40.1
4482	Nomex® Semi-slick/3 Layer E89	Crosstech® Type 2C	267.53	41.8
44B0	Nomex® Semi-slick/2 Layer E89	RT7100® Type 3D	278.91	39.6
44B2	Nomex® Semi-slick/2 Layer E89	Crosstech® Type 2C	299.53	36.8

Model	Thermal Liner	Moisture Barrier	THL	TPP
44F0	Nomex® Facecloth/Batt Light	RT7100® Type 3D	246.11	39.6
44F2	Nomex® Facecloth/Batt Light	Crosstech® Type 2C	256.67	39.0
44G0	Nomex® Semi-slick/Batt Light	RT7100® Type 3D	233.87	47.1
44G2	Nomex® Semi-slick/Batt Light	Crosstech® Type 2C	260.73	40.0
44I0	Meta Aramid/2 Layer Spunlace	RT7100® Type 3D	277.03	39.8
44I2	Meta Aramid/2 Layer Spunlace	Crosstech® Type 2C	285.44	37.3
44M0	Nomex® Semi-slick/2 Layer E89	RT7100® Type 3D	279.93	39.3
44M2	Nomex® Semi-slick/2 Layer E89	Crosstech® Type 2C	300.17	35.1
44P0	Nomex® Semi-slick/3 Layer E89	RT7100® Type 3D	248.45	41.6
44P2	Nomex® Semi-slick/3 Layer E89	Crosstech® Type 2C	271.32	44.8
44Q0	Nomex® Semi-slick/2 Layer E89	RT7100® Type 3D	259.71	38.7
44R0	Filament/Ring Spun Facecloth/ 3 Layer E89	RT7100® Type 3D	246.17	40.8
44R2	Filament/Ring Spun Facecloth/ 3 Layer E89	Crosstech® Type 2C	250.25	39.1
44S0	Nomex® Semi-slick/3 Layer E89	RT7100® Type 3D	237.13	44.7
44S2	Nomex® Semi-slick/3 Layer E89	Crosstech® Type 2C	270.46	42.2
44V0	Nomex® Semi-slick/Batt Light	RT7100® Type 3D	232.08	41.0
44V2	Nomex® Semi-slick/Batt Light	Crosstech® Type 2C	249.21	40.2

## THIRD PARTY TESTED AND COMPLIANT MODEL NUMBERS

### TPPs and THLs of Available Systems (continued)

Note: War Time replacement liners for xx1x, xx4x, xx6x, xxCx, xxGx, xxMx and xxPx will be substituted until original products are again available. THL and TPP data still accurate.

#### #54 Outer Shell – Kevlar®/Nomex® Enhanced Water Repellency Rip Stop 7.5 oz

Model	Thermal Liner	Moisture Barrier	THL	TPP
5400	Nomex® Facecloth/Batt Light	RT7100® Type 3D	234.11	45.1
5402	Nomex® Facecloth/Batt Light	Crosstech® Type 2C	244.37	46.0
5410	Nomex® Semi-slick/Batt Light	RT7100® Type 3D	237.29	44.0
5412	Nomex® Semi-slick/Batt Light	Crosstech® Type 2C	248.69	44.8
5420	Nomex® Facecloth/Batt Heavy	RT7100® Type 3D	231.38	44.3
5422	Nomex® Facecloth/Batt Heavy	Crosstech® Type 2C	247.99	42.1
5430	Nomex® Facecloth/3 Layer E89	RT7100® Type 3D	243.37	44.8
5432	Nomex® Facecloth/3 Layer E89	Crosstech® Type 2C	285.61	45.7
5440	Nomex® Semi-slick/2 Layer E89	RT7100® Type 3D	283.01	41.2
5442	Nomex® Semi-slick/2 Layer E89	Crosstech® Type 2C	299.80	39.2
544H	Nomex® Semi-slick/2 Layer E89	Chempak®	248.96	48.0
5470	Nomex® Semi-slick/Batt Light	RT7100® Type 3D	241.10	46.4
5472	Nomex® Semi-slick/Batt Light	Crosstech® Type 2C	240.40	43.8
5480	Nomex® Semi-slick/3 Layer E89	RT7100® Type 3D	254.03	44.8
5482	Nomex® Semi-slick/3 Layer E89	Crosstech® Type 2C	275.17	44.5
54B0	Nomex® Semi-slick/2 Layer E89	RT7100® Type 3D	297.81	41.8
54B2	Nomex® Semi-slick/2 Layer E89	Crosstech® Type 2C	299.22	37.9
54F0	Nomex® Facecloth/Batt Light	RT7100® Type 3D	231.91	43.7
54F2	Nomex® Facecloth/Batt Light	Crosstech® Type 2C	273.46	43.2
54G0	Nomex® Semi-slick/Batt Light	RT7100® Type 3D	253.45	49.1
54G2	Nomex® Semi-slick/Batt Light	Crosstech® Type 2C	238.90	44.8

Model	Thermal Liner	Moisture Barrier	THL	TPP
54H0	Meta Aramid/1 Layer Spunlace	RT7100® Type 3D	294.32	36.0
54i0	Meta Aramid/2 Layer Spunlace	RT7100® Type 3D	270.04	41.7
54i2	Meta Aramid/2 Layer Spunlace	Crosstech® Type 2C	289.96	39.5
54M0	Nomex® Semi-slick/2 Layer E89	RT7100® Type 3D	282.97	41.8
54M2	Nomex® Semi-slick/2 Layer E89	Crosstech® Type 2C	265.00	40.5
54P0	Nomex® Semi-slick/3 Layer E89	RT7100® Type 3D	255.04	46.8
54P2	Nomex® Semi-slick/3 Layer E89	Crosstech® Type 2C	249.57	43.5
54Q0	Nomex® Semi-slick/2 Layer E89	RT7100® Type 3D	257.67	42.6
54Q2	Nomex® Semi-slick/2 Layer E89	Crosstech® Type 2C	261.80	41.4
54R0	Filament/Ring Spun Facecloth/ 3 Layer E89	RT7100® Type 3D	241.41	44.0
54R2	Filament/Ring Spun Facecloth/ 3 Layer E89	Crosstech® Type 2C	262.87	41.9
54S0	Nomex® Semi-slick/3 Layer E89	RT7100® Type 3D	238.58	46.9
54S2	Nomex® Semi-slick/3 Layer E89	Crosstech® Type 2C	258.21	46.4
54U0	Nomex® Calendered Facecloth/ 2 Layer E89	RT7100® Type 3D	297.86	39.2
54U2	Nomex® Calendered Facecloth/ 2 Layer E89	Crosstech® Type 2C	311.11	36.4
54V0	Nomex® Semi-slick/Batt Light	RT7100® Type 3D	237.67	42.9
54V2	Nomex® Semi-slick/Batt Light	Crosstech® Type 2C	251.62	41.9
54W0	Nomex® Calendered Facecloth/ 3 Layer E89	RT7100® Type 3D	256.89	44.2
54W2	Nomex® Calendered Facecloth/ 3 Layer E89	Crosstech® Type 2C	278.61	43.4

Continued...

**THIRD PARTY TESTED AND COMPLIANT MODEL NUMBERS**

**TPPs and THLs of Available Systems (continued)**

Note: War Time replacement liners for xx1x, xx4x, xx6x, xxCx, xxGx, xxMx and xxPx will be substituted until original products are again available. THL and TPP data still accurate.

**#64 Outer Shell – PBO™/Kevlar®/Nomex® Enhanced Water Repellency Rip Stop 7.5 oz**

Model	Thermal Liner	Moisture Barrier	THL	TPP
6400	Nomex® Facecloth/Batt Light	RT7100® Type 3D	231.41	43.3
6402	Nomex® Facecloth/Batt Light	Crosstech® Type 2C	233.28	42.0
640T	Nomex® Facecloth/Batt Light	Crosstech® Type 4A	209.47	51.5
6410	Nomex® Semi-slick/Batt Light	RT7100® Type 3D	220.48	42.6
6412	Nomex® Semi-slick/Batt Light	Crosstech® Type 2C	227.55	38.6
6420	Nomex® Facecloth/Batt Heavy	RT7100® Type 3D	228.10	44.5
6422	Nomex® Facecloth/Batt Heavy	Crosstech® Type 2C	241.14	40.4
642T	Nomex® Facecloth/Batt Heavy	Crosstech® Type 4A	229.20	48.9
6430	Nomex® Facecloth/3 Layer E89	RT7100® Type 3D	249.85	44.4
6432	Nomex® Facecloth/3 Layer E89	Crosstech® Type 2C	263.19	42.1
643T	Nomex® Facecloth/3 Layer E89	Crosstech® Type 4A	241.67	48.0
6440	Nomex® Semi-slick/2 Layer E89	RT7100® Type 3D	270.82	38.4
6442	Nomex® Semi-slick/2 Layer E89	Crosstech® Type 2C	270.88	38.7
6470	Nomex® Semi-slick/Batt Light	RT7100® Type 3D	227.70	44.3
6472	Nomex® Semi-slick/Batt Light	Crosstech® Type 2C	208.69	41.7
647T	Nomex® Semi-slick/Batt Light	Crosstech® Type 4A	217.16	48.3
6480	Nomex® Semi-slick/3 Layer E89	RT7100® Type 3D	243.37	43.5
6482	Nomex® Semi-slick/3 Layer E89	Crosstech® Type 2C	265.81	40.8
64B0	Nomex® Semi-slick/2 Layer E89	RT7100® Type 3D	268.26	40.4
64B2	Nomex® Semi-slick/2 Layer E89	Crosstech® Type 2C	282.72	35.8
64F0	Nomex® Facecloth/Batt Light	RT7100® Type 3D	224.99	39.9
64F2	Nomex® Facecloth/Batt Light	Crosstech® Type 2C	234.02	39.5
64G0	Nomex® Semi-slick/Batt Light	RT7100® Type 3D	205.83	43.1
64G2	Nomex® Semi-slick/Batt Light	Crosstech® Type 2C	228.17	42.1
64I0	Meta Aramid/2 Layer Spunlace	RT7100® Type 3D	253.51	42.5
64I2	Meta Aramid/2 Layer Spunlace	Crosstech® Type 2C	283.44	37.6
64IT	Meta Aramid/2 Layer Spunlace	Crosstech® Type 4A	257.85	41.9

Model	Thermal Liner	Moisture Barrier	THL	TPP
64J0	Meta Aramid/3 Layer Spunlace	RT7100® Type 3D	231.83	41.4
64J2	Meta Aramid/2 Layer Spunlace	Crosstech® Type 2C	244.03	43.2
64LT	Meta Aramid/3 Layer Spunlace	Crosstech® Type 4A	257.90	44.4
64M0	Nomex® Semi-slick/2 Layer E89	RT7100® Type 3D	244.45	37.9
64M2	Nomex® Semi-slick/2 Layer E89	Crosstech® Type 2C	285.73	38.7
64P0	Nomex® Semi-slick/3 Layer E89	RT7100® Type 3D	240.70	44.1
64P2	Nomex® Semi-slick/3 Layer E89	Crosstech® Type 2C	233.36	45.7
64Q0	Nomex® Semi-slick/2 Layer E89	RT7100® Type 3D	252.40	41.4
64Q2	Nomex® Semi-slick/2 Layer E89	Crosstech® Type 2C	264.01	38.6
64QT	Nomex® Semi-slick/2 Layer E89	Crosstech® Type 4A	257.90	47.2
64R0	Filament/Ring Spun Facecloth/ 3 Layer E89	RT7100® Type 3D	261.51	42.9
64R2	Filament/Ring Spun Facecloth/ 3 Layer E89	Crosstech® Type 2C	244.35	41.6
64S0	Nomex® Semi-slick/3 Layer E89	RT7100® Type 3D	230.92	47.2
64S2	Nomex® Semi-slick/3 Layer E89	Crosstech® Type 2C	273.38	43.1
64ST	Nomex® Semi-slick/3 Layer E89	Crosstech® Type 2C	253.34	50.1
64U0	Nomex® Calendered Facecloth/ 2 Layer E89	RT7100® Type 3D	267.85	40.0
64U2	Nomex® Calendered Facecloth/ 2 Layer E89	Crosstech® Type 2C	295.03	37.0
64V0	Nomex® Semi-slick/Batt Light	RT7100® Type 3D	222.72	41.1
64V2	Nomex® Semi-slick/Batt Light	Crosstech® Type 2C	237.67	39.6
64Y0	Nomex® Semi-slick/3 Layer E89	RT7100® Type 3D	239.80	43.1
64Y2	Nomex® Semi-slick/3 Layer E89	Crosstech® Type 2C	240.05	41.6
64Z0	Nomex Waffle Semi-slick/ 3D 2 Layer E89	RT7100® Type 3D	258.00	46.8
64Z2	Nomex Waffle Semi-slick/ 3D 2 Layer E89	Crosstech® Type 2C	260.84	42.6
64ZT	Nomex Waffle Semi-slick/ 3D 2 Layer E89	Crosstech® Type 4A	260.21	47.8

**#76 Outer Shell – Aluminized Pbi™ 7.0 oz**

Model	Thermal Liner	Moisture Barrier	THL	TPP
7600	Nomex® Facecloth/Batt Light	RT7100® Type 3D	N/A	46.9
7602	Nomex® Facecloth/Batt Light	Crosstech® Type 2C	N/A	43.3
7610	Nomex® Semi-slick/Batt Light	RT7100® Type 3D	N/A	46.2
7612	Nomex® Semi-slick/Batt Light	Crosstech® Type 2C	N/A	43.3
7620	Nomex® Facecloth/Batt Heavy	RT7100® Type 3D	N/A	43.2
7622	Nomex® Facecloth/Batt Heavy	Crosstech® Type 2C	N/A	39.8
7630	Nomex® Facecloth/3 Layer E89	RT7100® Type 3D	N/A	49.0
7632	Nomex® Facecloth/3 Layer E89	Crosstech® Type 2C	N/A	44.5
7640	Nomex® Semi-slick/2 Layer E89	RT7100® Type 3D	N/A	41.4
7642	Nomex® Semi-slick/2 Layer E89	Crosstech® Type 2C	N/A	37.7
7670	Nomex® Semi-slick/Batt Light	RT7100® Type 3D	N/A	46.5
7680	Nomex® Semi-slick/3 Layer E89	RT7100® Type 3D	N/A	43.9
7682	Nomex® Semi-slick/3 Layer E89	Crosstech® Type 2C	N/A	43.8

Model	Thermal Liner	Moisture Barrier	THL	TPP
76H0	Meta Aramid/1 Layer Spunlace	RT7100® Type 3D	N/A	36.3
76I0	Meta Aramid/2 Layer Spunlace	RT7100® Type 3D	N/A	41.3
76I2	Meta Aramid/2 Layer Spunlace	Crosstech® Type 2C	N/A	38.9
76P0	Nomex® Semi-slick/3 Layer E89	RT7100® Type 3D	N/A	47
76P2	Nomex® Semi-slick/3 Layer E89	Crosstech® Type 2C	N/A	43.3
76Q0	Nomex® Semi-slick/2 Layer E89	RT7100® Type 3D	N/A	45.7
76Q2	Nomex® Semi-slick/2 Layer E89	Crosstech® Type 2C	N/A	39.1
76R0	Filament/Ring Spun Facecloth/ 3 Layer E89	RT7100® Type 3D	N/A	44.3
76R2	Filament/Ring Spun Facecloth/ 3 Layer E89	Crosstech® Type 2C	N/A	42.1
76S0	Nomex® Semi-slick/3 Layer E89	RT7100® Type 3D	N/A	45.2
76S2	Nomex® Semi-slick/3 Layer E89	Crosstech® Type 2C	N/A	47.7

**Footnotes, All Charts**

1. This material, when used with other layers that are also footnoted (1), will allow a composite system that can be certified to the 2007 edition of NFPA 1971 for Structural Fire Fighting Protective Garment Elements, if appropriate trim is also specified (please see catalog pages 89-92). If all materials chosen are footnoted (1) and you specify appropriate trim, your garment will automatically feature NFPA certification labeling. Please see discussion of NFPA 1971 in the Honeywell First Responder Products Reference Guide for further details.

2. This material, when used with other layers that are also footnoted (2), will allow a composite system that can be certified to meet NFPA 1971 for Proximity Fire Fighting Protective Garment Elements. If all materials chosen are footnoted (2), your garment will automatically feature NFPA certification labeling. Please see discussion of NFPA 1971 in the Honeywell First Responder Products Reference Guide for further details.

3. This material, when used with other layers that are also footnoted (3), will allow a composite system that can be certified to meet Project FIRES-Final Report, if required trim is also specified (please see catalog pages 89-92) and the following custom options are noted on your order:

- Project FIRES labeling
- traditional (i.e. non-bibbed) waist high pants with either Tails™ or 35" nominal coat
- and a long wristlet (which is standard on our BPR coats/Tails™).

Please see discussion of Project FIRES standard in Honeywell First Responder Products Reference Guide for further details.

4. Canadian General Standards Board – Nearly all Morning Pride composites are certified to CGSB 155.1 (2001). CGSB 155.1 (2001) includes many requirements that are identical to NFPA 1971, 2007 Edition, for Structural Fire Fighting Protective Ensembles, however, there are some key differences (see the Honeywell First Responder Products Reference Guide for a description of these differences). For a full discussion of the CGSB (and BNQ) requirements, please refer to those sections of the Honeywell First Responder Products Reference Guide.

5. This material, when used with other layers that are also footnoted (5), will allow a composite system that can be certified to the CEN standard, if the following custom options are noted on your order:

- CEN labeling
- 32"/35" Tails™ (when Tails™ are ordered)
- and a flapped waistband liner attachment (when pants are ordered).

It is not a Standard requirement, but many CEN specifiers also prefer reversed garment closure and tapered pants legs. Finally, many CEN specifiers wish to reduce either/both weight and cost from their garments; a list of such options is provided in our price list. Customers are cautioned that CEN insulation and other requirements are lower than those of the other Standards discussed on this page, so many CEN certifiable materials may NOT be used in other systems. Please see discussion of CEN garments in the Total Fire Group Reference Guide for further details.

6. This material, when used with other layers that are also footnoted (6), will allow a composite system that is triple, dual or single certified to NFPA 1999 to ensure bloodborne pathogen resistance testing has occurred.

7. 6 oz shells offer strong, anti-stress advantages but less durability (especially in pants). Customers are encouraged to weigh their relative needs for stress management - vs - durability.

8. Field testing has shown, under some conditions, this very lightweight system may exhibit unusually short alarm times (as compared to other more traditional systems). It is STRONGLY recommended that this liner be ordered with Dead Air Paneling – expanded placement (catalog pages 133-137), to retain stress reducing lightness while maximizing alarm times. Alarm time is the time between first pain recognition and second degree burns. Maximum alarm time gives the firefighter more time to alter the environment to avoid burns.

9. Southern Mills, manufacturer of this product, recommends this layer not be used with 6 oz outer shells because of barely compliant NFPA TPP levels (with some moisture barriers). You may request a summary of system composite TPP from our Customer Service Department for further details on how moisture barrier choice affects total insulation TPP provided.

**STEP 9. WINTER LINER CHOICES – ✓ One, If Desired**

(Catalog Reference Page 94)

With the exception of TAC garments, all Morning Pride garments may be ordered with an additional winter thermal liner for extra insulation against winter cold or the heat of a fire. We recommend the Nomex Fleece Vest on Structural and Proximity BPR and LTO, as well as Technical Rescue and Recovery and FR EMS gear, our Non-FR Fleece Vest and Thinsulate pant liner on EMS gear. All Structural and Proximity Winter Liners attach via MIL spec buttons and Technical Rescue and Recovery and EMS Winter Liners vests attach via zippers. Please consult Catalog page 76 for further details.

**STRUCTURAL & PROXIMITY PRH, BPR & LTO, Technical Rescue and Recovery & FR EMS GARMENTS**

Material	Series	Material	Series
<input type="checkbox"/> FR Fleece Vest	FR-FLC	<input type="checkbox"/> FR Fleece Vest w/Zipper	FR-FLCZ

(Technical Rescue and Recovery & EMS Only)

**NON-FR EMS GARMENTS**

Material	Series	Material	Series
<input type="checkbox"/> Non-FR Fleece Vest w/Zipper	FLCZ	<input type="checkbox"/> Thinsulate Pant	T

**STEP 10. ADVANCED PROTECTIVE TRACKING (APT) BARCODE SYSTEM – ✓ One, If Desired**

(Catalog Reference Pages 5-8)

- Level #1 Tracking Barcode Label (Standard)
- Level #2 Tracking CD with program
- Level #3 Tracking Retrofit kit to allow department barcoding of existing clothing stock (in addition to Level 2 program and also required) and priced above.  
NOTE: Retrofit barcoding (garment returned) services are also available at our factory (and often the most cost effective retrofit approach). Please call for quote and scheduling. Honeywell, upon request, will also custom quote an in-department retrofit of existing stock. However, because of travel costs, such an approach is usually only cost effective for large departments.
- Level #4 Tracking Programs to allow other asset category (truck, tools, etc.) tracking. Please call to describe your exact needs so we can provide a custom quote.

**STEP 11. NFPA 1851 SUPPORT SURVICES – ✓ If Desired**

(Catalog Reference Pages 9-16)

- NFPA 1971 Structural Cleaning and Inspection
- NFPA 1971 Structural Advanced Cleaning Only
- NFPA 1971 Structural 5-Year Wear Life Warranty

**STEP 12. CUSTOM STOCK CLOTHING**

(Catalog Reference Pages 64-66)

**“CUSTOM STOCK” MUST BE NOTED ON ORDER TO RECEIVE GUARANTEED 10-DAY SHIPMENT.**

The Custom Stock program has been such a success, that we are expanding the offering to include all colors of our most popular shells, as well as all our certified moisture barriers and our most popular thermal liner options IN ANY COMBINATION. The increasing automation of our facility allows us to offer you all these materials and most options WITH A TWO WEEK DELIVERY from time order is received (with all sizes and questions answered).

**What Options, Trim Packages ARE Available?**

All the trims (colors, styles, materials, placements, etc.) are available. And 99.9% of the custom options we offer are available.

**What Options, Trim Packages are NOT Available?**

Because they fall outside our normal manufacturing processes, we cannot allow options that require different basic cuts: All or Nothing System, Low Bulk Closure, Chicago Closure, Undershield Pockets, Harness Pants, Boot Access Panels, Body Armor, and Comfort Collar. If you must have one or more of these options and need accelerated delivery, please consider our Express program which offers accelerated delivery options with ANY option or material.

**Is Custom Stock Limited to the Just the Outer Shells, Thermal Liners and Moisture Barriers Listed Here?**

No! If additional combinations are required, please contact our Customer Service Department.

**Suggested Outer Shells**

**Pbi™/Kevlar®**

**BPR-32xx<sup>1,3,4</sup>** – 7.5 oz Rip Stop, Enhanced Water Repellency – *Bronze, Black 3 pic*

**Basofil®/Kevlar®**

**BPR-25xx<sup>1,3,4</sup>** – 7.5 oz Rip Stop, Enhanced Water Repellency  
*Natural (Pale Yellow), Bright Yellow, Golden Brown, Black*

**Kevlar®/Nomex®**

**BPR-14xx<sup>1,4,5</sup>** – 7.0 oz Rip Stop, Standard Water Repellency  
*Black, Yellow, Rust, Navy, Khaki, Gold*

**Nomex IIIA®**

**BPR-24xx<sup>1,4</sup>** – 7.5 oz Duck, Standard Water Repellency  
*Natural, Navy, Black, Tan, Yellow, Royal Blue, Red*

**Aluminized Pbi™**

**BPR-76xx<sup>2</sup>** – 7.0 oz 33% Aluminized Pbi™ 67% Aramid Knit – *Silver*

**Suggested Thermal Liners**

**Nomex® Batt Light**

**BPR-xx0x<sup>1,2,3,4</sup>** 7.2 oz – 3.4 oz Spun Nomex® Facecloth w/ 3.8 oz Light Kevlar® Batt  
(70% garneted, 30% virgin)

**Nomex® Batt Heavy**

**BPR-xx2x<sup>1,2,4</sup>** 9.4 oz – 3.4 oz Spun Nomex® Facecloth w/6.0 oz Heavy Nomex® Batt

**Nomex®/E89**

**BPR-xx3x<sup>1,2,3</sup>** 7.9 oz – 3.4 oz Spun Nomex® Facecloth w/3 Layers of E89  
Spunlace – 4.5 oz

**Nomex® Semi-Slick (War Time Replacement)**

**BPR-xx7x<sup>1,2,3</sup>** 7.7 oz (replacement liner for **xx1x**)3.9 oz Caldura Facecloth  
with lightweight Aralite Batt

**Suggested Moisture Barriers**

**Crosstech® Type 2C**

**BPR-xxx2<sup>1,2,3,4</sup>** 5.0 oz – 1.7 oz Crosstech® Selectively Permeable Film  
Laminated to 3.3 oz Nomex® Pajama Check Woven Substrate

**RT7100® Type 3D**

**BPRxxx0<sup>1,2,3</sup>** 4.6 oz – 1.6 oz GORE® Selectively Permeable Film Laminated  
to 3.0 oz Nomex® Pajama Check Woven Substrate

**STEP 13. EXPRESS SERVICE DELIVERY OPTIONS – ✓ One, If Desired**

(Catalog Page 66)

SV-EXPRESSThe EXPRESS Delivery Option (see Catalog page 66).  
Please state your choice; if no choice is listed, we will  
apply the most popular 6 week delivery up charge.

Item	Price
<input type="checkbox"/> 8 Week Express	7% Up charge
<input type="checkbox"/> 6 Week Express	10% Up charge
<input type="checkbox"/> 5 Week Express	15% Up charge
<input type="checkbox"/> 4 Week Express	20% Up charge

# COAT SPECS

## STEP 14. COAT REFLECTIVE TRIM PLACEMENT CHOICES – ✓ One

(Catalog Reference Pages 95-106)

(When Ordering STRUCTURAL, TAC, USR or EMS Gear, but NOT PROXIMITY)

- Certified Proximity models can **NOT** be ordered with trim
- Certified EMS garments can be ordered with any trim color, any trim material and any trim placement – OR – may be ordered without trim
- Certified Technical Rescue and Recovery and Structural garments **MUST** be ordered in any of the following placements (except where noted) in any of the fluorescent (not white or one tone silver) trim colors

**NOTE:** Diagrams of all placements available on referenced catalog pages.

### COAT STANDARD TRIM PLACEMENTS – Does NOT Meet Project FIRES Requirements

Part No.	Description	ADD for Split Cuff Trim	Trim Material Certification
<input type="checkbox"/> TR-STD1	2" Chest/Back, Sleeves & Hem	<input type="checkbox"/> ADD for 2" Split Cuffs	N/A in 3M™ Scotchlite™ Two-Tone
<input type="checkbox"/> TR-STD2	2" Chest/Back, Sleeves - 3" Hem	<input type="checkbox"/> ADD for 2" Split Cuffs	N/A in 3M™ Scotchlite™ Two-Tone
<input type="checkbox"/> TR-STD3	3" Chest/Back, Sleeves & Hem	<input type="checkbox"/> ADD for 3" Split Cuffs	All

**Dead Air Trim** –  Add for Dead Air Trim – Full Circumferential Bands Around Coat Cuffs

### COAT NEW YORK TRIM PLACEMENTS – Does NOT meet Project FIRES Requirements

Part No.	Description	ADD for Split Cuff Trim	Trim Material Certification
<input type="checkbox"/> TR-NY1	2" Chest/Back, Sleeves & Hem	<input type="checkbox"/> ADD for 2" Split Cuffs	N/A in 3M™ Scotchlite™ Two-Tone
<input type="checkbox"/> TR-NY2	3" Chest/Back, Sleeves & Hem	<input type="checkbox"/> ADD for 3" Split Cuffs <input type="checkbox"/> ADD for 3" Split Upper Arm Bands	All

**Dead Air Trim** –  Add for Dead Air Trim – Full Circumferential Bands Around Coat Cuffs

### COAT PROJECT FIRES TRIM PLACEMENTS – DOES Meet Project FIRES Requirements

Part No.	Description	ADD for Split Cuff Trim	Trim Material Certification
<input type="checkbox"/> TR-PF1	3" Chest/Back, Sleeves & Hem	<input type="checkbox"/> ADD for 3" Split Cuffs	All

**Dead Air Trim** –  Add for Dead Air Trim – Full Circumferential Bands Around Coat Cuffs

- NOTES:**
1. Morning Pride covers pockets with aligned trim, when necessary, to preserve NFPA trim pattern requirements at no extra charge.
  2. Morning Pride garments feature a full continual chest band of trim (no shield gap), unlike some competitors.
  3. Special trim packages will be quoted on request.
  4. Specify color of trim and whether you require 3M™ Scotchlite™ Solid, Reflexite®, 3M™ Scotchlite™ Two-Tone trim or Glo-Flex®, when you order.

## STEP 15. COAT TRIM MATERIAL & COLOR CHOICES – ✓ One

(Catalog Reference Pages 95-106)

(When Ordering STRUCTURAL, USR or EMS Gear, but NOT PROXIMITY)

### COLORS/MATERIALS

- Lime Reflexite®  White Reflexite® (EMS Only)\*  Solid Orange 3M™ Scotchlite™  Solid Lime 3M™ Scotchlite™  Solid Silver 3M™ Scotchlite™ (EMS Only)\*  White 3M™ Scotchlite™ (EMS Only)\*  Orange Two-Tone 3M™ Scotchlite™  Lime Two-Tone 3M™ Scotchlite™  Lime Two-Tone Glo-Flex®  White (light greenish) Glo-Flex®  Yellow Glo-Flex®  Solid

**NOTES:** \*Does not meet requirements of NFPA, Project FIRES or OSHA since they are not fluorescent colors.

**Glo-Flex® Trims Not Yet Available...Due to the recent change in NFPA 1971, the standard now requires improved florescence. Glo-Flex® had to redesign and resubmit for approval the trims listed below. At the time of this catalog printing, Glo-Flex® has not received their approvals. Before ordering any of these trims, please contact our Customer Service Department to see if Glo-Flex® has received their approvals.**

**STEP 16. OTHER COAT REFLECTIVE CHOICES – ✓ One if Desired**

(Catalog Reference Page 98)

- Large 3M™ Scotchlite™ Silver Star of Life (Give Placement) \_\_\_\_\_
- Large Reflexite® Sewn-on Star of Life (EMS Only) (Give Placement) \_\_\_\_\_
- Small Reflexite® Sewn-on Star of Life (EMS Only) (Give Placement) \_\_\_\_\_
- American Flag (Glo-Flex®) (Give Placement) \_\_\_\_\_
- Canadian Flag (Glo-Flex®) (Give Placement) \_\_\_\_\_

**NOTE:** Any special placement instructions may also be noted in diagrams on page 25.

**STEP 17. COAT LETTERING MATERIAL & PLACEMENT CHOICES – ✓ One**

(Catalog Reference Page 98)

*(When Ordering STRUCTURAL, USR or EMS Gear, but NOT PROXIMITY)*

- |   |                                 |                               |   |                                 |
|---|---------------------------------|-------------------------------|---|---------------------------------|
| <input type="checkbox"/> 2" Bonded Heat Set 3M™ Scotchlite™ | <input type="checkbox"/> Orange | <input type="checkbox"/> Lime | <input type="checkbox"/> White (EMS Only) | <input type="checkbox"/> Silver |
| <input type="checkbox"/> 2" Sewn 3M™ Scotchlite™            | <input type="checkbox"/> Orange | <input type="checkbox"/> Lime | <input type="checkbox"/> White (EMS Only) | <input type="checkbox"/> Silver |
| <input type="checkbox"/> 3" Bonded Heat Set 3M™ Scotchlite™ | <input type="checkbox"/> Orange | <input type="checkbox"/> Lime | <input type="checkbox"/> White (EMS Only) | <input type="checkbox"/> Silver |
| <input type="checkbox"/> 3" Sewn 3M™ Scotchlite™            | <input type="checkbox"/> Orange | <input type="checkbox"/> Lime | <input type="checkbox"/> White (EMS Only) | <input type="checkbox"/> Silver |
| <input type="checkbox"/> 2" Sewn Reflexite®                 | <input type="checkbox"/> Orange | <input type="checkbox"/> Lime | <input type="checkbox"/> White (EMS Only) |                                 |
| <input type="checkbox"/> 3" Sewn Reflexite®                 | <input type="checkbox"/> Orange | <input type="checkbox"/> Lime | <input type="checkbox"/> White (EMS Only) |                                 |
| <input type="checkbox"/> 2" Sewn Glo Flex                   | White                           |                               |   |                                 |
| <input type="checkbox"/> 3" Sewn Glo Flex                   | White                           |                               |   |                                 |

**1st LETTERING PATCH**

Lettering To Be: \_\_\_\_\_

Patch Type:  Sewn     Velcro    Patch Placement: \_\_\_\_\_

**2nd LETTERING PATCH**

Lettering To Be: \_\_\_\_\_

Patch Type:  Sewn     Velcro    Patch Placement: \_\_\_\_\_

**STEP 18. COAT CUSTOM OPTIONS – ✓ If Desired**

**CHINSTRAP & COLLAR OPTIONS** (Catalog Reference Pages 113-114)

- |   |  |
|---|--|
| <input type="checkbox"/> Adjustable, Replaceable (Only on LTO)  | <input type="checkbox"/> Sliding Chinstrap – BPR               |
| <input type="checkbox"/> Comfort Chinstrap – LTO (Not Foldover) | <input type="checkbox"/> Foldover Comfort Chinstrap – BPR      |
| <input type="checkbox"/> Standard Chinstrap – LTO               | <input type="checkbox"/> Stabilized Foldover Comfort Chinstrap |
| <input type="checkbox"/> Detachable Proximity Collar            | <input type="checkbox"/> Comfort Nomex® Collar and Chinstrap   |
| <input type="checkbox"/> Foldover Comfort Chinstrap – LTO       | (can be used with all chinstrap options in this section)       |
| <input type="checkbox"/> Sliding Chinstrap – LTO                |  |

**CLOSURE OPTIONS** (Catalog Reference Pages 115-117)

**ALL OR NOTHING CLOSURE OPTIONS**

- Coat

**COAT CLOSURE OPTIONS – Structural & Proximity Models Only (USR & EMS have zipper with interior Hook & Pile only)**

- Reverse Hooks & Ds w/1½" Hook & Pile interior (STD)
- 1½" Hook & Pile exterior w/zipper interior
- 2" Hook & Pile exterior w/zipper interior
- Reverse Hooks & Ds exterior w/2" Hook & Pile interior
- 7" Shield Hook & Pile exterior w/Reverse Hooks & Ds interior (aka Chicago Closure)

Step 18 Continues...

## **STEP 18. COAT CUSTOM OPTIONS *continued***

### **CLOSURE OPTIONS *continued*** (Catalog Reference Pages 115-117)

#### **FRONT CLOSURE INTERFACE SYSTEM**

- Coat

#### **LOW BULK CLOSURE OPTIONS**

- Coat

**NOTE:** Structural & Proximity Coats/Tails may also be ordered with no interior (or non-continuous) Hook & Pile by simply noting request on your order. Please check below if you request:

- Delete Inner Hook & Pile  
 Make Inner Hook & Pile Non-Continuous

### **CUFF OPTIONS** (Catalog Reference Pages 118-120)

#### **COAT CUFFS REINFORCEMENTS**

- Coat Cuffs – Reinforced with Additional Layer Same Fabric (STD).  
State Material Choice if not Matching Outer Shell: \_\_\_\_\_
- Coat Cuffs – Reinforced with Arashield®\* Color: \_\_\_\_\_
- Coat Cuffs – Reinforced with Leather\*
- Coat Cuffs – Reinforced with Kevlar®

\*Morning Pride Does NOT Recommend Leather or Arashield Reinforcements – Refer to Catalog Page 118 Discussion.

#### **DETACHABLE PROXIMITY CUFF**

- Coat

#### **GLOVE INTERFACE SLEEVE**

- Glove Interface Sleeve

#### **MAGNET MATE GLOVES AND COAT SLEEVE ENDS**

- Coat – Glove Size: \_\_\_\_\_

#### **SHINGLE CUFFS** (Not Available on TAC, Technical Rescue and Recovery or EMS)

- Velcro® (standard if not specified)  Sewn
- Shingle Coat Cuffs  
State Material Choice if not Matching Outer Shell: \_\_\_\_\_

### **DISPOSABLE ANALYSIS STRIP OPTION** (Catalog Reference Page 121)

- Disposable Strip (Made of Black Outer Shell Material)

### **ELBOW REINFORCEMENT OPTIONS** (Catalog Reference page 122)

Must Specify One if Ordering USR

- BiFlex Elbows – State Material Choice if not Matching Outer Shell: \_\_\_\_\_
- Reinforced Elbows – State Material Choice if not Matching Outer Shell: \_\_\_\_\_
- Cushioned Elbows
- Heat Channel Elbows – State Material Choice if not Matching Outer Shell: \_\_\_\_\_

### **EPAULETTES OPTION** (Catalog Reference Page 122)

- Epaulettes –  Velcro® or  Sewn

### **FACEPIECE MATE OPTION** (Catalog Reference Page 123)

- Coat

*Step 18 Continues...*

**STEP 18. COAT CUSTOM OPTIONS *continued***

**HOOD OPTIONS** (Catalog Reference Page 123)

**FOR Technical Rescue and Recovery & EMS GARMENTS**

- Hide-away Storage w/Zipper     Velcro® (standard if none specified)
- 2 Layer Outer Shell & Moisture Barrier Specified
- 3 Layer Outer Shell, Moisture Barrier & Thermal Liner Specified

**INSULATIVE COOLING, POSITIVE PRESSURE VENT OPTION** (Catalog Reference Page 124)

- Coat

**LINER OPTIONS** (Catalog Reference Pages 131-139)

**BODY ARMOR LININGS**

- Coats/Tails

**DEAD AIR INSULATION PANELS**

- Standard Dead Air                       Coats/Tails
- Extended Dead Air
- Per panel – Specify placements \_\_\_\_\_

**EZ MOVE COMBO LINER**

Only available when ordering xxFx liner

- Coat/Tail

**FLEX FACILITATOR PANELS**

- Elbows

**LINER LOCATOR**

- Coats/Tails

**FULL COMPOSITE HEMMING**

- Coats

**VECTOR FLEX TUCKS**

- Coats/Tails

**WEIGHT REDUCTION HEMMING**

- Coats

**LUMBAR SUPPORT COAT OPTIONS** (Catalog Reference Pages 140-141)

- Lumbar Support Belt with New Coat Adaptation
- Lumbar Support Belt Alone
- Adapt New Coat to Accommodate Lumbar Support Belt (does not include belt)

**PASSPORT OPTIONS** (Catalog Reference Page 142)

**GARMENT BASED PASSPORT ACCOUNTABILITY SYSTEMS**

- 2" x 4" Yellow Nomex® ID Tag on Velcro
- 2" x 3½" Velcro Only Sewn to Garment
- 1" x 4" Reflexite® Bar ID Tag on Velcro
- 1" x 4" Any Fabric ID Tag on Velcro (Specify Fabric)
- 1" x 3½" Velcro Only Sewn to Garment

Placement: \_\_\_\_\_

**PERSONALIZATION (Integral Customization) OPTIONS** (Catalog Reference Page 142)

**INTEGRAL CUSTOMIZATION – Finished Art Work or Patch Must be Supplied**

- FR Cotton (Standard if No Material Specified)
- Natural Nomex®

Placement: \_\_\_\_\_

- Department Logo
- Canadian Flag
- American Flag
- Other: \_\_\_\_\_

*Step 18 Continues...*

## STEP 18. COAT CUSTOM OPTIONS *continued*

### **POCKET, CLIP & HOOK OPTIONS** ✓ any desired, also ✓ if other than standard desired

(Catalog Reference Pages 143-147)

- Patch Pockets (set of 2 for Coats) 10" H x 9" W
- Half Height Patch Pockets (set of 2) 8" H x 9" W
- Handwarmer Pockets  Moisture Barrier (Lightness)  Moisture Barrier/Thermal (Warmth)
- Half Height Bellows Pockets for Tails™, 6" H x 9" W x 1½" D  Kevlar Lined  Other: \_\_\_\_\_  
(Neoprene Lined)  EZ Grip Flap
- Semi Bellows  Handwarmer In Front of Bellows  Bottom Sewn Flat  Hinged Design
- Large Half Height Bellows Pockets for Tails™, 7" H x 10" W x 2" D or Larger  Kevlar Lined  Other: \_\_\_\_\_  
(Neoprene Lined)  EZ Grip Flap
- Semi Bellows  Handwarmer In Front of Bellows  Bottom Sewn Flat  Hinged Design
- NY Tails Pocket, 7" H x 12" W x 3½" D, Semi Bellows, Kevlar Lined, Angled and Moisture Barrier Lined Flap, 4/1 Velcro
- Bellows Pockets for Standard Length Coats, 9" H x 9" W x 1½" D  Kevlar Lined  Other: \_\_\_\_\_  
(Neoprene Lined)  EZ Grip Flap
- Semi Bellows  Handwarmer In Front of Bellows  Bottom Sewn Flat  Hinged Design
- Large Bellows Pockets for Standard Length Coats, 10" H x 10" W x 2" D  Kevlar Lined  Other: \_\_\_\_\_  
(Neoprene Lined)  EZ Grip Flap
- Semi Bellows  Handwarmer In Front of Bellows  Bottom Sewn Flat  Hinged Design
- External Expandable Handwarmer Pockets
- Pleated Patch Pockets with Handwarmer Behind
- Notebook Pocket – Specify Placement \_\_\_\_\_  Pencil Slot
- Undershield Pockets  Two (2) Standard  (1) Specify Placement –  Upper  Lower
- Bandolero Pockets (2) – Specify  Velcro (Standard) or  Zipper Closure
- Air Mask Pocket – Specify  Velcro (STD) or  Zipper Closure – Only Right Chest Unless Detachable
- Radio Pocket – (8" H x 3" W x 2" D is STD) or Specify Size \_\_\_\_\_ Placement (Left Chest is STD) \_\_\_\_\_  
 Radio Pocket Antenna Notch  Left Side  Right Side  Both  Hinged Design
- Mike Tab (Standard Placement is 1" Above Radio Pocket) – Specify Placement \_\_\_\_\_
- Flashlight Pocket – Specify 2 or 3 Cell Size \_\_\_\_\_ Placement \_\_\_\_\_
- LA Air Mask Pocket (7" H x 3" W x 2" D) Combo – (Right Chest Only)
- LA Air Mask Pocket/Radio Pocket (7" H x 3" W x 2" D) Combo – (Right Chest Only)
- USR/EMS Pocket Lining (Must be chosen when Handwarmers or Bandolero are ordered)
- Special instructions for any basic pockets checked above (i.e. pocket dividers, special reinforcements, unique sizes, split flaps, etc.): \_\_\_\_\_

**NOTE:** Please use diagrams on page 25 to note any special pocket requirements.

- Flashlight Clip with Snaps on Strap\* – Placement (Right Chest is Standard) \_\_\_\_\_
- Flashlight Clip with Velcro on Strap\* – Placement (Right Chest is Standard) \_\_\_\_\_
- Reverse Clip (aka Large Hook) on a Patch\* – Placement \_\_\_\_\_
- Reverse Clip on a Patch with Velcro Strap\* – Placement \_\_\_\_\_
- Lanyard Flashlight Clips\*  – Style #1\*  – Style #2\* Placement \_\_\_\_\_
- SL-90 Flashlight Clip – Placement \_\_\_\_\_

\* Not Available on USAR and EMS due to metal.

*Step 18 Continues...*

**STEP 18. COAT CUSTOM OPTIONS *continued***

**RESCUE OPTIONS** (Catalog Reference Pages 148-158)

- |   |  |
|---|--|
| <input type="checkbox"/> Circumferential Rope Pocket Coat                               | <input type="checkbox"/> Articulating Rapid Rescue Strap and Coat Opening (Standard)       |
| <input type="checkbox"/> Rapid Rescue Strap and Coat Opening,<br>(No Options Available) | <input type="checkbox"/> Positive Closure Articulating Rapid Rescue Strap and Coat Opening |
| <input type="checkbox"/> Configurable 5 Person Drag System                              | <input type="checkbox"/> Rolled Suitcase Hand Hold System                                  |
| <input type="checkbox"/> 2 Extra Shoulder DRD Flaps                                     | <input type="checkbox"/> 6" Deployment Tab   |
| Note: See Pant Custom Options (page 28)<br>for Knee Options                             | <input type="checkbox"/> 6" Deployment Tab with Reflective Trim                            |
|   | <input type="checkbox"/> FDNY Metro DRD Package  |

**SHOULDER OPTION** (Catalog Reference Page 159)

- BiFlex Shoulders – State Material Choice if not Matching Outer Shell: \_\_\_\_\_

**WILDLAND/STRUCTURAL DUAL CERTIFICATION OPTION** (Catalog Reference Page 160)

- Wildland/Structural Dual Certification Option

**WRISTLET OPTIONS** (Catalog Reference Page 161)

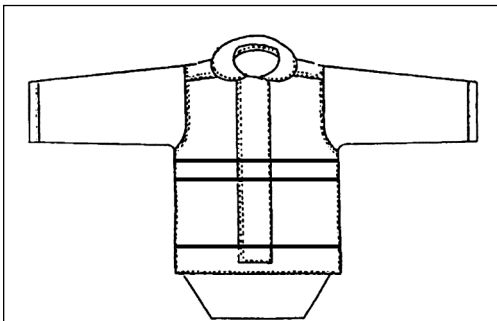
- |  |                                 |                                  |                               |
|--|---------------------------------|----------------------------------|-------------------------------|
| <input type="checkbox"/> Tabbed Long Nomex® Wristlet – Recommended | <input type="checkbox"/> Nomex® | <input type="checkbox"/> Kevlar® | <input type="checkbox"/> Pbi™ |
|--|---------------------------------|----------------------------------|-------------------------------|

(Nomex® is standard on Structural and Proximity BPR Gear. A shorter tabbed wristlet is standard on Technical Rescue and Recovery)

- |   |                                 |                                  |                               |
|---|---------------------------------|----------------------------------|-------------------------------|
| <input type="checkbox"/> Fabric Covered Thumbhole | <input type="checkbox"/> Nomex® | <input type="checkbox"/> Kevlar® | <input type="checkbox"/> Pbi™ |
| <input type="checkbox"/> Turned Thumbhole         | <input type="checkbox"/> Nomex® | <input type="checkbox"/> Kevlar® | <input type="checkbox"/> Pbi™ |
| <input type="checkbox"/> Overcast Thumbhole       | <input type="checkbox"/> Nomex® | <input type="checkbox"/> Kevlar® | <input type="checkbox"/> Pbi™ |
| <input type="checkbox"/> Bartacked Thumbhole      | <input type="checkbox"/> Nomex® | <input type="checkbox"/> Kevlar® | <input type="checkbox"/> Pbi™ |

***Use Pictures & Space Below For Any Additional Information You Need Added To Your Specification:***

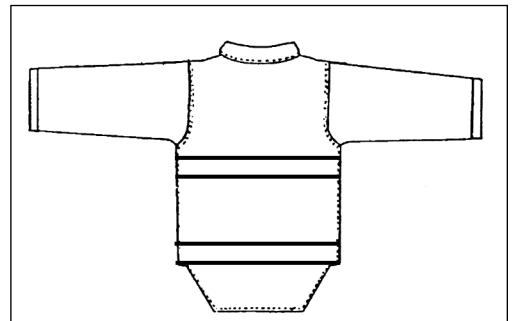
**FRONT**



**SPECIAL INSTRUCTIONS**



**BACK**



# PANT SPECS

## STEP 19. PANT REFLECTIVE TRIM PLACEMENT CHOICES – ✓ One

(Catalog Reference Pages 95-106)

- Certified Proximity models can **NOT** be ordered with trim
- Certified EMS garments can be ordered with any trim color, any trim material and any trim placement – OR – may be ordered without trim
- Certified Technical Rescue and Recovery and Structural garments **MUST** be ordered in any of the following placements (except where noted) in any of the fluorescent (not white or one tone silver) trim colors

**NOTE:** Diagrams of all placements available on referenced catalog pages.

### PANTS TRIM PLACEMENTS – DOES Meet Project FIRES Requirements

Part No.	Description	Trim Material Certification
<input type="checkbox"/> TR-CF1	2" Cuffs	N/A in 3M™ Scotchlite™ Two-Tone
<input type="checkbox"/> TR-CF2	3" Cuffs	All
<input type="checkbox"/> TR-CS1	2" Cuffs/Seams	N/A in 3M™ Scotchlite™ Two-Tone
<input type="checkbox"/> TR-CS2	3" Cuffs/Seams	All
<input type="checkbox"/> TR-CS3	3" Cuffs/2" Seams	All
<input type="checkbox"/> TR-CS4	2" Cuffs/3" Seams	N/A in 3M™ Scotchlite™ Two-Tone
<input type="checkbox"/> TR-SB	Extra Seam Trim Over Bellows	All

- NOTES:**
1. Morning Pride covers pockets with aligned trim, when necessary, to preserve NFPA trim pattern requirements at no extra charge.
  2. Morning Pride garments feature a full continual chest band of trim (no shield gap), unlike some competitors.
  3. Special trim packages will be quoted on request.
  4. Specify color of trim and whether you require 3M™ Scotchlite™ Solid, Reflexite®, 3M™ Scotchlite™ Two-Tone trim or Glo-Flex®, when you order.

Optional extra trim (such as pants seams ordered with bellows pockets) will be covered by requested options unless your order specifies otherwise. This most commonly occurs with bellows pockets and pants seam trim. We have provided in the price list the extra cost for keeping the seam trim continuous over the bellows pockets.

## STEP 20. PANT TRIM MATERIAL & COLOR CHOICES – ✓ One

(When Ordering STRUCTURAL, USR or EMS Gear, but NOT PROXIMITY)

(Catalog Reference Pages 95-106)

### COLORS/MATERIALS

- Lime Reflexite®     White Reflexite® (EMS Only)\*     Solid Orange 3M™ Scotchlite™     Solid Lime 3M™ Scotchlite™     Solid Silver 3M™ Scotchlite™ (EMS Only)\*     Solid  
 White 3M™ Scotchlite™ (EMS Only)\*     Orange Two-Tone 3M™ Scotchlite™     Lime Two-Tone Scotchlite®  
 Lime Two-Tone Glo-Flex®     White (light greenish) Glo-Flex®     Yellow Glo-Flex®

**NOTES:** \*Does not meet requirements of NFPA, Project FIRES or OSHA since they are not fluorescent colors.

## STEP 21. PANT SUSPENDER CHOICES – ✓ One If Desired

(Catalog Reference Pages 107-109)

- Dyna-Fit 8 Point w/Hook Attachment     Dyna-Back with w/Hook Attachment     Regular Heavy Duty – Red  
 Dyna-Fit 8 Point w/Snap Attachment     Dyna-Back with w/Snap Attachment

### SUSPENDER CUSTOM OPTIONS – ✓ One if desired (Not available on Heavy Duty Suspenders)

- ADD Two-Tone 3M™ Scotchlite™ Trim     Lime     Orange     ADD Solid 3M™ Scotchlite™ Trim     Lime     Orange  
 Quick Adjust Option     Padding

**NOTE:** Structural and Proximity pants must be optioned to utilize “Rig Friendly” Snap Attachment suspenders. TAC, Technical Rescue and Recovery and EMS pants can only be used with Snap Attachment suspenders.

**STEP 22. PANT CUSTOM OPTIONS – ✓ If Desired**

**BELT OPTIONS** (Catalog Reference Page 110)

- Pants Belt – Kevlar®       Belt Loops (7)       PBO®/Pbi™/Aluminized       Other  
 Encased Quick Attach Belt

**BOOT to PANT INTERFACE OPTIONS** (Catalog Reference Pages 111-112)

- Boot Access Panels (Standard Length)  
 Boot Access Panels  
(Shorter 12" Length for Technical Rescue and Recovery Only)  
 Integrated Boots and Pants  
 Waterwells  
 Wick Guard

**CLOSURE OPTIONS** (Catalog Reference Pages 115-117)

**ALL OR NOTHING CLOSURE OPTIONS**     Pants

**LOW BULK CLOSURE OPTIONS**     Pants

**PANTS CLOSURE OPTIONS** – Structural & Proximity Models Only (USAR & EMS have zipper with interior Hook & Pile only)

- Reverse Hooks & Ds exterior w/1½" Hook & Pile interior, narrow fly (STD)  
 Reverse Hooks & Ds exterior w/2" Hook & Pile interior, narrow fly  
 Reverse Hooks & Ds at top of fly w/round snaps narrow fly  
 Reverse Hooks & Ds external w/1½" Hook & Pile interior, wide fly  
 Reverse Hooks & Ds external w/2" Hook & Pile interior, wide fly  
 Zipper (add on)

**CROTCH OPTIONS** (Catalog Reference Pages 118)

- Replaceable Crotch (for Proximity Applications)

**CUFF OPTIONS** (Catalog Reference Pages 118-120)

**ANGLED CUFFS**

- Angled Pant Cuffs

**PANT CUFFS REINFORCEMENTS**

- Pant Cuffs with Outer Shell Hem (Standard)       Pant Cuffs with Arashield®\* – Color: \_\_\_\_\_  
 Pant Cuffs with Matching Outer Shell       Pant Cuffs with Leather\*  
 Pant Cuffs with Kevlar®       Pant Cuffs with Other Outer Shell  
State Material \_\_\_\_\_

\*Morning Pride Does NOT Recommend Leather or Arashield® Reinforcements – Refer to Catalog Page 118 Discussion.

**DISPOSABLE ANALYSIS STRIP OPTION** (Catalog Reference Page 121)

- Disposable Strip (Made of Black Outer Shell Material)

**FLY OPTION** (Catalog Reference Page 123)

- Fly Overfold

**STEP 22. PANT CUSTOM OPTIONS *continued***

**KNEE OPTIONS**

(Catalog Reference Pages 125-131)

REPLACEABLE     SEWN ON

- BiFlex Heat Channel Knees (exterior placement standard; note if less comfortable interior placement is desired)
- Heat Channel Knees (exterior placement standard; note if less comfortable interior placement is desired)
- Puncture Resistant, Heat Channel Knees (exterior placement std; circle if less comfortable interior placement is desired)
- Reinforced Knees (exterior placement)
- Cushioned Reinforced Knees (exterior placement)

Specify if other than outer shell matching material/color knee reinforcement is desired: \_\_\_\_\_

**Notes on knee options:**

- Morning Pride does not recommend the use of either leather (potential rot & decontamination problems) or Arashield® (potential heat sink problems) as a reinforcement material choices.
- Only aluminized exterior reinforcements (except 1" at cuffs) may be used on Series 76xx Proximity garments.
- Advance® is an extremely durable reinforcement material and is available in black to blend well with any outer shell. Kevlar® is also an extremely durable reinforcement choice, but is available only in pale yellow (not a problem when used as an interior reinforcement).

**LINER OPTIONS**

(Catalog Reference Pages 1302-139)

**BODY ARMOR LININGS**

Pants

**BOOT INTERFACE PANELS**

Pants

**DEAD AIR INSULATION PANELS**

Standard Dead Air Pants

Per panel – Specify placements \_\_\_\_\_

**FLEX FACILITATOR PANELS**

Knees

**LINER LOCATOR**

Pants

**VECTOR FLEX TUCKS**

Pants

**POCKET OPTIONS**

✓ any desired, also ✓ if other than standard desired

(Catalog Reference Pages 143-146)

- |  |   |
|--|---|
| <input type="checkbox"/> Bellows Pockets, 9" H x 9" W x 1 1/2" D (Neoprene Lined)  | <input type="checkbox"/> Kevlar Lined <input type="checkbox"/> Other: _____ |
|  | <input type="checkbox"/> Semi Bellows <input type="checkbox"/> EZ Grip Flap |
|  | <input type="checkbox"/> Bottom Sewn Flat <input type="checkbox"/> Divider  |
| <input type="checkbox"/> Large Bellows Pockets, 10" H x 10" W x 2" D (Neoprene Lined)  | <input type="checkbox"/> Kevlar Lined <input type="checkbox"/> Other: _____ |
|  | <input type="checkbox"/> Semi Bellows <input type="checkbox"/> EZ Grip Flap |
|  | <input type="checkbox"/> Bottom Sewn Flat <input type="checkbox"/> Divider  |
| <input type="checkbox"/> Medical Records Pocket <input type="checkbox"/> One (1) (Right Side is Standard)  | <input type="checkbox"/> Two (2)  |
| <input type="checkbox"/> Hip Pocket <input type="checkbox"/> One (1) (Right Side is Standard)  | <input type="checkbox"/> Two (2)  |
| <input type="checkbox"/> Contoured Pockets   | <input type="checkbox"/> Kevlar Lined <input type="checkbox"/> Other: _____ |
|  | <input type="checkbox"/> EZ Grip Flap                                       |
| <input type="checkbox"/> Large Contoured Pockets   | <input type="checkbox"/> Kevlar Lined <input type="checkbox"/> Other: _____ |
|  | <input type="checkbox"/> EZ Grip Flap                                       |
| <input type="checkbox"/> USR/EMS Pocket Lining (Must be chosen when Medical Records Pockets are ordered)   |   |
| <input type="checkbox"/> Special instructions for any basic pockets checked above (i.e. pocket dividers, special reinforcements, unique sizes, split flaps, etc.): |   |

**NOTE:** Please use diagrams on page 29 to note any special pocket requirements.

*Step 22 Continues...*

**STEP 22. PANT CUSTOM OPTIONS continued**

**RESCUE OPTIONS**

(Catalog Reference Pages 148-158)

- Configurable 5 Person Drag System
  - Knee DRD Set     Knee Leg Lift Trimmed Deployment Tab(Must also specify Replaceable Knees)
- Escape Belt – Kevlar®
- Exterior Harness Pants (Closes Left Over Right)  
No Harness (Contact our Customer Service Department for Harness purchase information)
- Harness Bunker Pants (Includes Internal Harness)
- Harness Bunker Pants (No Internal Harness)
- NY Style Harness Bunker Pants (No Harness) – Wide, Reversed Fly  
(Closes Right Over Left) Contact us for harness purchase information.
- FDNY Rope Pocket (Order as a separate uninstalled item)

**TAKE-UP STRAPS OPTIONS**

(Catalog Reference Page 159)

- Take-Up Strap D-ring (one)
- Postman Slide Take-Up Strap (one)
- Set of 2 (two) Quick Release Nylon Take-Up Straps
- Set of 2 (two) Take-Up Straps D-ring
- Set of 2 (two) Postman Slide Take-Up Straps

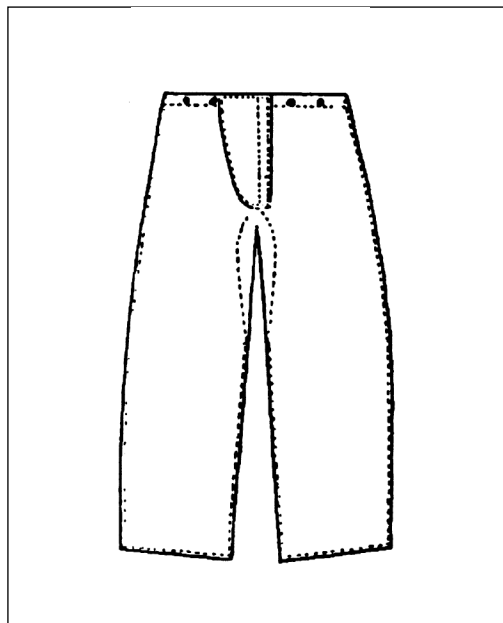
**WILDLAND/STRUCTURAL DUAL CERTIFICATION OPTION**

(Catalog Reference Page 160)

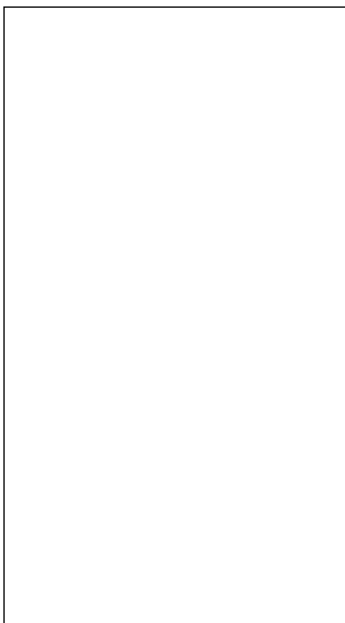
- Wildland/Structural Dual Certification Option

**Use Pictures & Space Below For Any Additional Information You Need Added To Your Specification:**

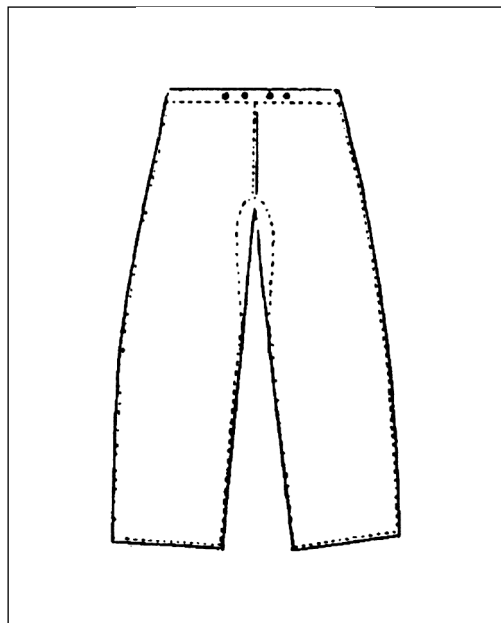
**FRONT**



**SPECIAL INSTRUCTIONS**



**BACK**



## STEP 23. AUXILIARY CLOTHING OPTIONS – ✓ One , If Desired

(Catalog Reference Page 162-166)

### **HIGH VISIBILITY VESTS**

- First Responder, Flame Resistant High Visibility Vest    Regular    Extra Large  
 Coat Epaulettes to Integrate Vests and Coat

Vest Lettering – Specify: \_\_\_\_\_

### **SCBA COVERS**

- Aluminized SCBA Cover – Specify Bottle Size and Manufacturer    High Visibility SCBA Tank Cover

### **INCIDENT COMMAND VEST OPTIONS**

#### **MATERIAL**

7.5 oz. Nomex®

#### **COLORS** (Select One)

Black    Natural    Red    Tan    Royal Blue    Yellow    Navy

(Call for quote if other material required)

#### **TRIM**

#### **MATERIAL**

Scotchlite®

Reflexite®

Glo-Flex®

#### **COLORS** (Select One)

Lime    Orange    Lime Two-Tone    Orange Two-Tone

Lime    Orange    White    Lime Power Trim    Orange Power Trim

Lime Two-Tone    White    Yellow

#### **CUSTOM OPTIONS**

- Half Height Pockets    Radio Pocket   (Call for quote if any other options are desired (i.e. other pockets, mike tabs, clips, etc.))

### **TRAINING PRODUCTS OPTIONS**

- Training Cape    Training Knee – Specify  Kevlar® or  PBO®    Thigh Protector

### **DETACHABLE GLOVE KEEPER**

### ***Aluminized Products:***

- ***Cleaning and Care Instructions***
- ***12-Month Cloth Warranty Limitations***

All manufacturers in the fire service use the Gentex #1098 aluminized knit Pbi™/Para Arimid material for Proximity certified products (helmet shrouds, clothing, gloves, etc). Gentex is the only supplier of certified product in the market, and hence this information applies to ALL brands. We have seen delamination of these products (ours and other brands). While we have seen this in both washed and unwashed products, Gentex feels cleaning is the issue and has provided us with the following cleaning instructions.

***The outer shell of this garment contains a highly reflective surface and it is extremely important to keep this surface clean so that it may perform at peak efficiency.***

- Clean by gently rubbing the surface with a soft cloth or sponge and a mild soap
- Rinse thoroughly
- DO NOT MACHINE WASH
- Dry garment by hanging in a well ventilated, shaded area
- Use a fan to circulate the air if necessary

- Do not store garment wet or with any chemical contamination
- Do not clean with any compounds containing ammonia, chlorine, other oxidizing or abrasive agents.

**Note:** These newer Cleaning Instructions supersede the FEMSA User Guide instructions. The NFPA 1851 care document also requires hanging storage of Aluminized coats and pants (not folded).

Further, Gentex has advised that they normally limit their warranty to 12 months (even if all Gentex instructions are followed) and cover material replacement ONLY – all other costs must be borne by the customer! Morning Pride will continue to warrant against defects in material or workmanship for the life of the product. But we cannot be responsible for what Gentex is classifying as normal for the #1098 material (i.e. delamination if not washed, dried, and stored as above and a limited warranty period of 12 months on material replacement only, regardless of care).

Please contact our Customer Service Department for further assistance on this or any issue.

DuPont™ and Kevlar® are trademarks or registered trademarks of E.I. du Pont de Nemours and Company.

# Need Wildland Gear?

(Catalog Reference Pages 33 – 34)

There are two ways to purchase Wildland certified clothing product: 1. The Wildland Dual Certification Option for NFPA 1971 Certified Structural Fire Fighting Gear and 2) The Wildland Quad (or Quint if Rescue and Recovery is also specified) Certification for NFPA 1951 Technical Rescue and Recovery Garments (which are also NFPA 1999 EMS Certified and NFPA 1992 Liquid Splash HazMat Certified).

Another Honeywell company, American Firewear also offers two Wildland clothing options (please see their catalog for full details): 1. Tri-certified NFPA 1977 Certified Wildland Jumpsuits and 2 Piece BDUs (also Certified to NFPA 1971 Requirements for Station Uniforms and NFPA 1951 Technical Rescue and Recovery Utility Garments and 2) American Firewear's Traditional Wildland Jumpsuit or 2 Piece Sets.

## *Also Certified to NFPA Requirements for Wildland Fire Fighting and Station Uniforms*

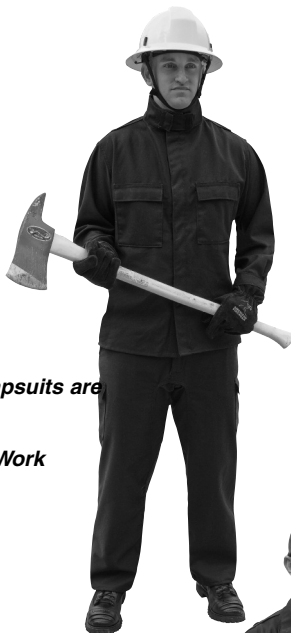


- *Tri-Certified*
- *Patented Product Improvements*
- *More Custom Fitting*
- *More Options*
- *Quick Delivery*
- *Excellent Pricing*

***American Firewear is Proud to Introduce Our Newest Offering Designed to Meet the Utility Level Requirements of the Newly Published 2007 Edition of NFPA 1951 Standard on Protective Ensembles for Technical Rescue Operations\****

These new garments are available in both Jumpsuit and BDU (Battle Dress Uniform) styles and are tri-certified to the following NFPA standards:

- NFPA 1951 Technical Rescue Operations – Utility Garments
- NFPA 1977 Wildland Fire Fighting
- NFPA 1975 Station and Work Uniforms for Fire and Emergency Services



***Both Utility BDUs and Jumpsuits are Also Certified to:***

- *NFPA 1977 Wildland*
- *NFPA 1975 Station and Work Uniforms*

***Uniquely Designed to Meet the Needs of the First Responder Marketplace, these BDUs and Jumpsuits Offer:***

- ***Tailored to Fit*** Garments that are fit to the individual NOT to standard Small, Medium, Large and XL patterns. Finally First Responders can get garments that not only fit their needs but fit them comfortably.
- ***Completely Customizable Garments with Quick Delivery*** – Departments can choose from a huge selection of custom options to design these garments based on the job that needs to be done. From Urban Search and Rescue to Confined Space to Auto Extrication – our automated factory means we now have the ability to design the garment to meet the needs of the first responder while providing increased safety and comfort QUICKLY.



***Utility BDUs and Jumpsuits are Designed to Meet the Needs of Law Enforcement Tactical Applications***

***Tri-certified BDUs can be Worn as Station Wear and for Technical Rescue Operations***



**\*Note:** "USAR" is NFPA 1951, 2001 edition, term for a protective garment with many (but NOT all) similarities to the 2007 edition Rescue and Recovery garment. Since the 2001 edition of NFPA 1951 is no longer current, usage of this term should be avoided and the current edition term "Rescue and Recovery" should be used to describe 2007 edition products.

**A New Era in Dramatically Improved Hand Protection**

**The Super Glove Delivers Phenomenal Dexterity and Fit with Enhanced Protection!**

# Super Glove



*Exclusive Kangaroo and Digiroot Leathers Offer Exceptional Durability, Grip, and Dexterity*

*Air Spacer™ Thermal Architecture Traps Air for Thermal Protection without Traditional Bulk*

*Kevlar®/Nomex® Lining and Breathable Crosstech® Moisture Barrier Enhance Protection from Heat, Slash, and Steam-related Burns*

*Multi-Layer 3-D Styling and Bubble-Flex Features Permit More Natural Hand Movements, Adding to Dexterity and Overall Comfort*

## **Structural Fire Fighting Gloves:**

*Gauntlet (GL-SGKCG) Certified to: NFPA 1971, 2007 Edition Structural*

*Wristlet (GL-SGKCW)*

*QUAD Certified to:*

- NFPA 1971, 2007 Edition Structural
- NFPA 1999 EMS Work Gloves
- NFPA 1951 Technical Rescue and Recovery
- NFPA 1951 Technical Rescue/Utility

Made in the U.S.A.

Regular Sizes: XXS, XS, S, M, L, XL, 2XL, 3XL

Cadet Sizes: XXS, XS, S, M, L, XL, 2XL, 3XL

*Patented, Patent Pending and Proprietary Technologies*



**MORNING PRIDE**

by Honeywell

Contact our Customer Service Department at (800) 688-6148 for information on:

- Clothing financing plans
- Guaranteed wear life programs that include NFPA 1851 tracking, repair & cleaning
- The various standards regulating your PPE

**We Are Here To Help You!**